

MRP7 rabbit pAb**Cat#: orb765700 (Manual)**

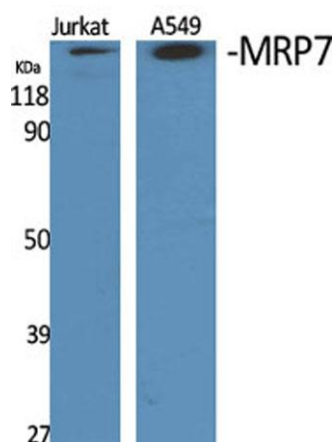
For research use only. Not intended for diagnostic use.

Product Name	MRP7 rabbit pAb
Host species	Rabbit
Applications	WB;IHC
Species Cross-Reactivity	Human;Monkey
Recommended dilutions	WB 1:500-2000;IHC-p 1:50-300
Immunogen	The antiserum was produced against synthesized peptide derived from human MRP7. AA range:835-884
Specificity	MRP7 Polyclonal Antibody detects endogenous levels of MRP7 protein.
Formulation	Liquid in PBS containing 50% glycerol, 0.5% BSA and 0.02% sodium azide..
Storage	Store at -20°C. Avoid repeated freeze-thaw cycles.
Protein Name	Multidrug resistance-associated protein 7
Gene Name	ABCC10
Cellular localization	Cell membrane ; Multi-pass membrane protein . Basolateral cell membrane ; Multi-pass membrane protein .
Purification	The antibody was affinity-purified from rabbit antiserum by affinity-chromatography using epitope-specific immunogen.
Clonality	Polyclonal

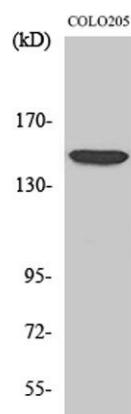
Concentration	1 mg/ml
Observed band	162kD
Human Gene ID	89845
Human Swiss-Prot Number	Q5T3U5
Alternative Names	ABCC10; MRP7; SIMRP7; Multidrug resistance-associated protein 7; ATP-binding cassette sub-family C member 10

Background

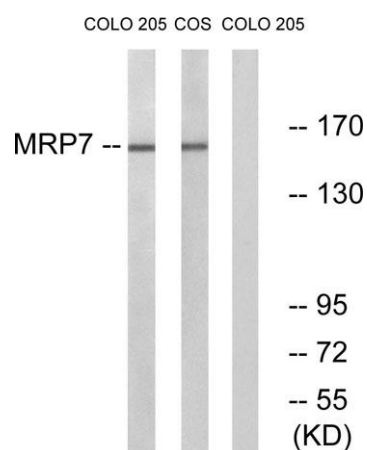
The protein encoded by this gene is a member of the superfamily of ATP-binding cassette (ABC) transporters. ABC proteins transport various molecules across extra- and intra-cellular membranes. ABC genes are divided into seven distinct subfamilies (ABC1, MDR/TAP, MRP, ALD, OABP, GCN20, and White). This ABC full-transporter is a member of the MRP subfamily which is involved in multi-drug resistance. Multiple transcript variants encoding different isoforms have been found for this gene.[provided by RefSeq, Nov 2010],



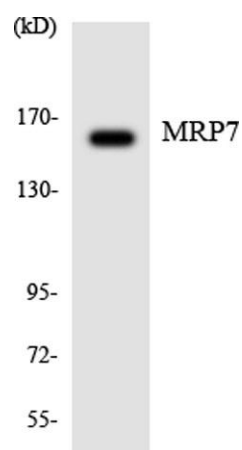
Western Blot analysis of various cells using MRP7 Polyclonal Antibody diluted at 1:1000



Western Blot analysis of COS7 cells using MRP7 Polyclonal Antibody diluted at 1:1000



Western blot analysis of lysates from COLO and COS7 cells, using MRP7 Antibody. The lane on the right is blocked with the synthesized peptide.



Western blot analysis of the lysates from HepG2 cells using MRP7 antibody.