

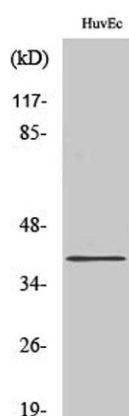
MRGF rabbit pAb

Cat#: orb765696 (Manual)

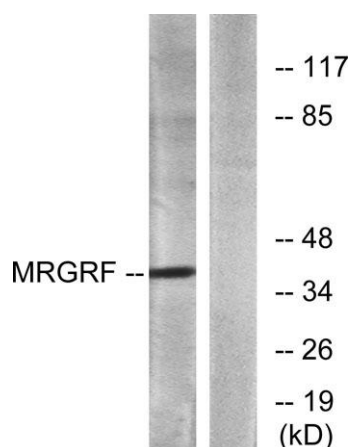
For research use only. Not intended for diagnostic use.

Product Name	MRGF rabbit pAb
Host species	Rabbit
Applications	WB;IHC
Species Cross-Reactivity	Human;Mouse;Rat
Recommended dilutions	WB 1:500-2000;IHC-p 1:50-300
Immunogen	The antiserum was produced against synthesized peptide derived from human MRGRF. AA range:271-320
Specificity	MRGF Polyclonal Antibody detects endogenous levels of MRGF protein.
Formulation	Liquid in PBS containing 50% glycerol, 0.5% BSA and 0.02% sodium azide..
Storage	Store at -20°C. Avoid repeated freeze-thaw cycles.
Protein Name	Mas-related G-protein coupled receptor member F
Gene Name	MRGPRF
Cellular localization	Cell membrane; Multi-pass membrane protein.
Purification	The antibody was affinity-purified from rabbit antiserum by affinity-chromatography using epitope-specific immunogen.
Clonality	Polyclonal

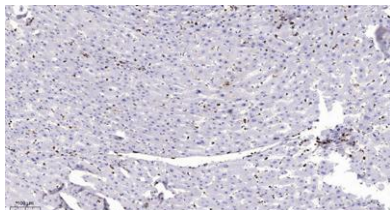
Concentration	1 mg/ml
Observed band	40kD
Human Gene ID	116535
Human Swiss-Prot Number	Q96AM1
Alternative Names	MRGPRF; GPR140; GPR168; MRGF; PSEC0142; Mas-related G-protein coupled receptor member F; Mas-related gene F protein; G-protein coupled receptor 140; G-protein coupled receptor 168
Background	function:Orphan receptor. May bind to a neuropeptide and may regulate nociceptor function and/or development, including the sensation or modulation of pain.,similarity:Belongs to the G-protein coupled receptor 1 family.,similarity:Belongs to the G-protein coupled receptor 1 family. Mas subfamily.,



Western Blot analysis of various cells using MRGF Polyclonal Antibody



Western blot analysis of lysates from HUVEC cells, using MRGRF Antibody. The lane on the right is blocked with the synthesized peptide.



Immunohistochemical analysis of paraffin-embedded human liver cancer. 1, Antibody was diluted at 1:200(4° overnight). 2, Tris-EDTA,pH9.0 was used for antigen retrieval. 3,Secondary antibody was diluted at 1:200(room temperature, 45min).