

MRCK α rabbit pAb**Cat#: orb765692 (Manual)**

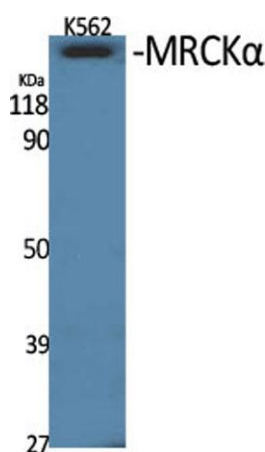
For research use only. Not intended for diagnostic use.

Product Name	MRCK α rabbit pAb
Host species	Rabbit
Applications	WB;ELISA;IHC
Species Cross-Reactivity	Human;Mouse;Rat
Recommended dilutions	WB 1:500-2000;IHC-p 1:50-300; ELISA 2000-20000
Immunogen	Synthesized peptide derived from the Internal region of human MRCK α . AA range: 580-660
Specificity	MRCK α Polyclonal Antibody detects endogenous levels of MRCK α protein.
Formulation	Liquid in PBS containing 50% glycerol, 0.5% BSA and 0.02% sodium azide..
Storage	Store at -20°C. Avoid repeated freeze-thaw cycles.
Protein Name	Serine/threonine-protein kinase MRCK alpha
Gene Name	CDC42BPA
Cellular localization	Cytoplasm . Cell projection, lamellipodium . Displays a dispersed punctate distribution and concentrates along the cell periphery, especially at the leading edge and cell-cell junction. This concentration is PH-domain dependent. Localizes in the lamellipo
Purification	The antibody was affinity-purified from rabbit antiserum by affinity-chromatography using epitope-specific immunogen.

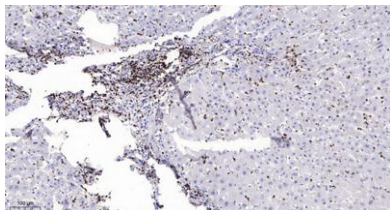
Clonality	Polyclonal
Concentration	1 mg/ml
Observed band	200kD
Human Gene ID	8476
Human Swiss-Prot Number	Q5VT25
Alternative Names	CDC42BPA; KIAA0451; Serine/threonine-protein kinase MRCK alpha; CDC42-binding protein kinase alpha; DMPK-like alpha; Myotonic dystrophy kinase-related CDC42-binding kinase alpha; MRCK alpha; Myotonic dystrophy protein kinase-like alpha

Background

The protein encoded by this gene is a member of the Serine/Threonine protein kinase family. This kinase contains multiple functional domains. Its kinase domain is highly similar to that of the myotonic dystrophy protein kinase (DMPK). This kinase also contains a Rac interactive binding (CRIB) domain, and has been shown to bind CDC42. It may function as a CDC42 downstream effector mediating CDC42 induced peripheral actin formation, and promoting cytoskeletal reorganization. Multiple alternatively spliced transcript variants have been described, and the full-length nature of two of them has been reported. [provided by RefSeq, Jul 2008]



Western Blot analysis of various cells using MRCKα Polyclonal Antibody



Immunohistochemical analysis of paraffin-embedded human liver cancer. 1, Antibody was diluted at 1:200(4° overnight). 2, Tris-EDTA,pH9.0 was used for antigen retrieval. 3,Secondary antibody was diluted at 1:200(room temperature, 45min).