

Mnk1 rabbit pAb

Cat#: orb765683 (Manual)

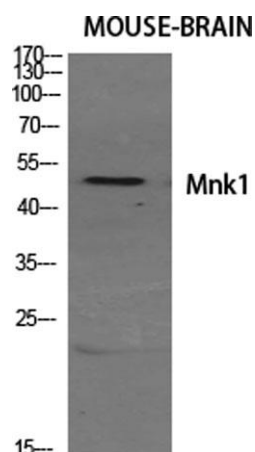
For research use only. Not intended for diagnostic use.

Product Name	Mnk1 rabbit pAb
Host species	Rabbit
Applications	WB;IHC;IF;ELISA
Species Cross-Reactivity	Human;Mouse
Recommended dilutions	Western Blot: 1/500 - 1/2000. Immunohistochemistry: 1/100 - 1/300. ELISA: 1/20000. Not yet tested in other applications.
Immunogen	The antiserum was produced against synthesized peptide derived from human MKNK1. AA range:111-160
Specificity	Mnk1 Polyclonal Antibody detects endogenous levels of Mnk1 protein.
Formulation	Liquid in PBS containing 50% glycerol, 0.5% BSA and 0.02% sodium azide..
Storage	Store at -20°C. Avoid repeated freeze-thaw cycles.
Protein Name	MAP kinase-interacting serine/threonine-protein kinase 1
Gene Name	MKNK1
Cellular localization	[Isoform 2]: Cytoplasm.; [Isoform 3]: Cytoplasm. Nucleus.
Purification	The antibody was affinity-purified from rabbit antiserum by affinity-chromatography using epitope-specific immunogen.
Clonality	Polyclonal

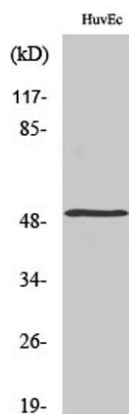
Concentration	1 mg/ml
Observed band	51kD
Human Gene ID	8569
Human Swiss-Prot Number	Q9BUB5
Alternative Names	MKNK1; MNK1; MAP kinase-interacting serine/threonine-protein kinase 1; MAP kinase signal-integrating kinase 1; MAPK signal-integrating kinase 1; Mnk1

Background

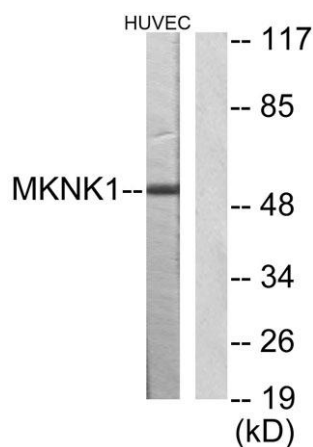
MAP kinase interacting serine/threonine kinase 1(MKNK1) Homo sapiens
This gene encodes a Ser/Thr protein kinase that interacts with, and is activated by ERK1 and p38 mitogen-activated protein kinases, and thus may play a role in the response to environmental stress and cytokines. This kinase may also regulate transcription by phosphorylating eIF4E via interaction with the C-terminal region of eIF4G. Alternatively spliced transcript variants have been noted for this gene. [provided by RefSeq, Jan 2012],



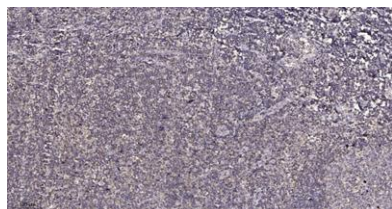
Western Blot analysis of various cells using Mnk1 Polyclonal Antibody diluted at 1:500



Western Blot analysis of HuvEc cells using Mnk1 Polyclonal Antibody diluted at 1:500



Western blot analysis of lysates from HUVEC cells, using MKNK1 Antibody. The lane on the right is blocked with the synthesized peptide.



Immunohistochemical analysis of paraffin-embedded human tonsil. 1, Antibody was diluted at 1:200(4° overnight). 2, Tris-EDTA,pH9.0 was used for antigen retrieval. 3,Secondary antibody was diluted at 1:200(room temperature, 30min).