

## MN1 rabbit pAb

**Cat#: orb765682 (Manual)**

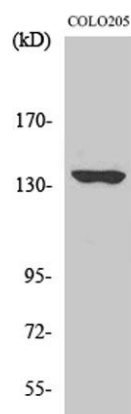
For research use only. Not intended for diagnostic use.

<b>Product Name</b>	MN1 rabbit pAb
<b>Host species</b>	Rabbit
<b>Applications</b>	WB;ELISA;IHC
<b>Species Cross-Reactivity</b>	Human;Rat;Mouse;
<b>Recommended dilutions</b>	WB 1:500-2000;IHC-p 1:50-300; ELISA 2000-20000
<b>Immunogen</b>	The antiserum was produced against synthesized peptide derived from human MN1. AA range:821-870
<b>Specificity</b>	MN1 Polyclonal Antibody detects endogenous levels of MN1 protein.
<b>Formulation</b>	Liquid in PBS containing 50% glycerol, 0.5% BSA and 0.02% sodium azide..
<b>Storage</b>	Store at -20°C. Avoid repeated freeze-thaw cycles.
<b>Protein Name</b>	Probable tumor suppressor protein MN1
<b>Gene Name</b>	MN1
<b>Cellular localization</b>	Nucleus .
<b>Purification</b>	The antibody was affinity-purified from rabbit antiserum by affinity-chromatography using epitope-specific immunogen.
<b>Clonality</b>	Polyclonal

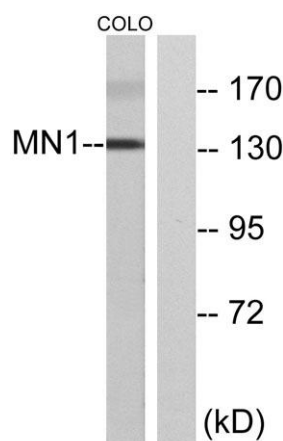
<b>Concentration</b>	1 mg/ml
<b>Observed band</b>	135kD
<b>Human Gene ID</b>	4330
<b>Human Swiss-Prot Number</b>	Q10571
<b>Alternative Names</b>	MN1; Probable tumor suppressor protein MN1

### Background

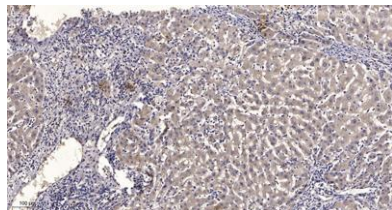
Meningioma 1 (MN1) contains two sets of CAG repeats. It is disrupted by a balanced translocation (4;22) in a meningioma, and its inactivation may contribute to meningioma 32 pathogenesis. [provided by RefSeq, Jul 2008],



Western Blot analysis of various cells using MN1 Polyclonal Antibody diluted at 1:2000



Western blot analysis of lysates from COLO cells, using MN1 Antibody. The lane on the right is blocked with the synthesized peptide.



**Immunohistochemical analysis of paraffin-embedded human liver cancer. 1, Antibody was diluted at 1:200(4° overnight). 2, Tris-EDTA,pH9.0 was used for antigen retrieval. 3,Secondary antibody was diluted at 1:200(room temperature, 45min).**