

## MLKL rabbit pAb

**Cat#: orb765675 (Manual)**

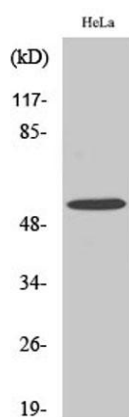
For research use only. Not intended for diagnostic use.

<b>Product Name</b>	MLKL rabbit pAb
<b>Host species</b>	Rabbit
<b>Applications</b>	WB;IHC
<b>Species Cross-Reactivity</b>	Human;Rat;Mouse;
<b>Recommended dilutions</b>	WB 1:500-2000;IHC-p 1:50-300
<b>Immunogen</b>	Synthesized peptide derived from MLKL . at AA range: 40-120
<b>Specificity</b>	MLKL Polyclonal Antibody detects endogenous levels of MLKL protein.
<b>Formulation</b>	Liquid in PBS containing 50% glycerol, 0.5% BSA and 0.02% sodium azide..
<b>Storage</b>	Store at -20°C. Avoid repeated freeze-thaw cycles.
<b>Protein Name</b>	Mixed lineage kinase domain-like protein
<b>Gene Name</b>	MLKL
<b>Cellular localization</b>	Cytoplasm . Cell membrane . Nucleus . Localizes to the cytoplasm and translocates to the plasma membrane on necroptosis induction (PubMed:24316671). Localizes to the nucleus in response to orthomyxoviruses infection (By similarity). .
<b>Purification</b>	The antibody was affinity-purified from rabbit antiserum by affinity-chromatography using epitope-specific immunogen.

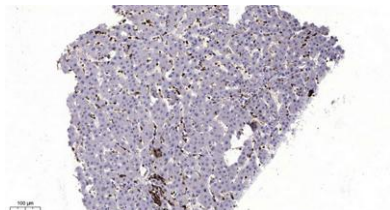
<b>Clonality</b>	Polyclonal
<b>Concentration</b>	1 mg/ml
<b>Observed band</b>	55kD
<b>Human Gene ID</b>	197259
<b>Human Swiss-Prot Number</b>	Q8NB16
<b>Alternative Names</b>	MLKL; Mixed lineage kinase domain-like protein

### Background

This gene belongs to the protein kinase superfamily. The encoded protein contains a protein kinase-like domain; however, is thought to be inactive because it lacks several residues required for activity. This protein plays a critical role in tumor necrosis factor (TNF)-induced necroptosis, a programmed cell death process, via interaction with receptor-interacting protein 3 (RIP3), which is a key signaling molecule in necroptosis pathway. Inhibitor studies and knockdown of this gene inhibited TNF-induced necrosis. High levels of this protein and RIP3 are associated with inflammatory bowel disease in children. Alternatively spliced transcript variants have been described for this gene. [provided by RefSeq, Sep 2015],



**Western Blot analysis of various cells using MLKL Polyclonal Antibody diluted at 1:500**



**Immunohistochemical analysis of paraffin-embedded human liver cancer. 1, Antibody was diluted at 1:200(4° overnight). 2, Tris-EDTA,pH9.0 was used for antigen retrieval. 3,Secondary antibody was diluted at 1:200(room temperature, 45min).**