

## MINK1 rabbit pAb

**Cat#: orb765666 (Manual)**

For research use only. Not intended for diagnostic use.

<b>Product Name</b>	MINK1 rabbit pAb
<b>Host species</b>	Rabbit
<b>Applications</b>	WB;IHC;IF;ELISA
<b>Species Cross-Reactivity</b>	Human;Mouse
<b>Recommended dilutions</b>	Western Blot: 1/500 - 1/2000. Immunohistochemistry: 1/100 - 1/300. ELISA: 1/20000. Not yet tested in other applications.
<b>Immunogen</b>	The antiserum was produced against synthesized peptide derived from human MAP4K6. AA range:401-450
<b>Specificity</b>	MINK1 Polyclonal Antibody detects endogenous levels of MINK1 protein.
<b>Formulation</b>	Liquid in PBS containing 50% glycerol, 0.5% BSA and 0.02% sodium azide..
<b>Storage</b>	Store at -20°C. Avoid repeated freeze-thaw cycles.
<b>Protein Name</b>	Misshapen-like kinase 1
<b>Gene Name</b>	MINK1
<b>Cellular localization</b>	Cytoplasm . Cell junction, synapse, postsynaptic density . Cell projection, axon . Cell projection, dendrite .; [Isoform 4]: Golgi apparatus.
<b>Purification</b>	The antibody was affinity-purified from rabbit antiserum by affinity-chromatography using       epitope-specific immunogen.
<b>Clonality</b>	Polyclonal

**Concentration** 1 mg/ml

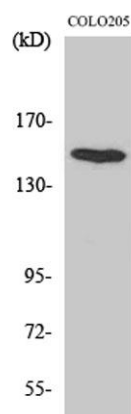
**Observed band** 150kD

**Human Gene ID** 50488

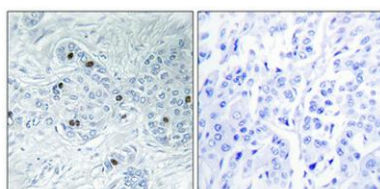
**Human Swiss-Prot Number** Q8N4C8

**Alternative Names** MINK1; B55; MAP4K6; MINK; YSK2; ZC3; Misshapen-like kinase 1; GCK family kinase MiNK; MAPK/ERK kinase kinase kinase 6; MEK kinase kinase 6; MEKKK 6; Misshapen/NIK-related kinase; Mitogen-activated protein kinase kinase kinase 6

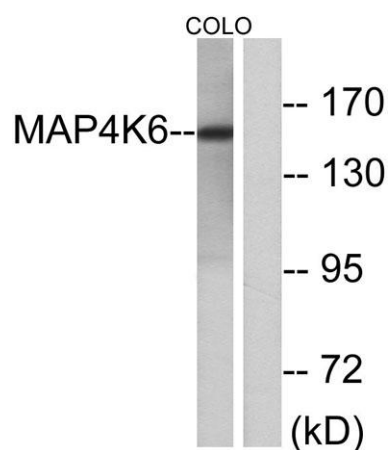
**Background** This gene encodes a serine/threonine kinase belonging to the germinal center kinase (GCK) family. The protein is structurally similar to the kinases that are related to NIK and may belong to a distinct subfamily of NIK-related kinases within the GCK family. Studies of the mouse homolog indicate an up-regulation of expression in the course of postnatal mouse cerebral development and activation of the cJun N-terminal kinase (JNK) and the p38 pathways. [provided by RefSeq, Mar 2016],



**Western Blot analysis of various cells using MINK1 Polyclonal Antibody diluted at 1:1000**



**Immunohistochemical analysis of paraffin-embedded Human breast cancer. Antibody was diluted at 1:100(4° overnight). High-pressure and temperature Tris-EDTA,pH8.0 was used for antigen retrieval. Negative contrl (right) obtained from antibody was pre-absor**



Western blot analysis of lysates from COLO cells, using MAP4K6 Antibody. The lane on the right is blocked with the synthesized peptide.