

MaxiK α rabbit pAb

Cat#: orb765628 (Manual)

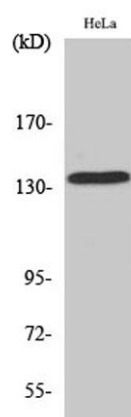
For research use only. Not intended for diagnostic use.

Product Name	MaxiK α rabbit pAb
Host species	Rabbit
Applications	WB;IHC;IF;ELISA
Species Cross-Reactivity	Human;Mouse;Rat
Recommended dilutions	Western Blot: 1/500 - 1/2000. Immunohistochemistry: 1/100 - 1/300. ELISA: 1/40000. Not yet tested in other applications.
Immunogen	The antiserum was produced against synthesized peptide derived from human MaxiK α . AA range:721-770
Specificity	MaxiK α Polyclonal Antibody detects endogenous levels of MaxiK α protein.
Formulation	Liquid in PBS containing 50% glycerol, 0.5% BSA and 0.02% sodium azide..
Storage	Store at -20°C. Avoid repeated freeze-thaw cycles.
Protein Name	Calcium-activated potassium channel subunit alpha-1
Gene Name	KCNMA1
Cellular localization	Cell membrane ; Multi-pass membrane protein .
Purification	The antibody was affinity-purified from rabbit antiserum by affinity-chromatography using epitope-specific immunogen.
Clonality	Polyclonal

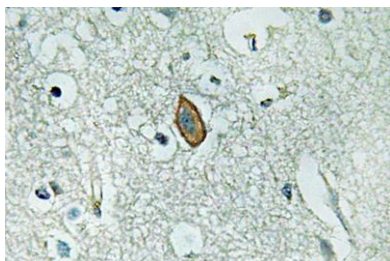
Concentration	1 mg/ml
Observed band	137kD
Human Gene ID	3778
Human Swiss-Prot Number	Q12791
Alternative Names	KCNMA1; KCNMA; SLO; Calcium-activated potassium channel subunit alpha-1; BK channel; BKCA alpha; Calcium-activated potassium channel; subfamily M subunit alpha-1; K(VCA)alpha; KCa1.1; Maxi K channel; MaxiK; Slo-alpha; Slo1; Slowpoke homolog

Background

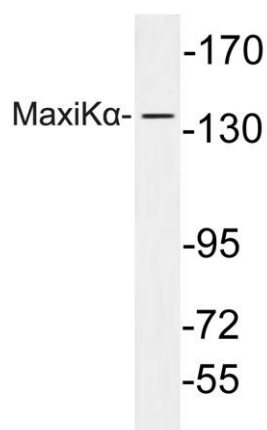
potassium calcium-activated channel subfamily M alpha 1(KCNMA1) Homo sapiens MaxiK channels are large conductance, voltage and calcium-sensitive potassium channels which are fundamental to the control of smooth muscle tone and neuronal excitability. MaxiK channels can be formed by 2 subunits: the pore-forming alpha subunit, which is the product of this gene, and the modulatory beta subunit. Intracellular calcium regulates the physical association between the alpha and beta subunits. Alternatively spliced transcript variants encoding different isoforms have been identified. [provided by RefSeq, Jul 2008],



Western Blot analysis of various cells using MaxiK α Polyclonal Antibody



Immunohistochemistry analysis of MaxiK α antibody in paraffin-embedded human brain tissue.



Western blot analysis of lysate from HeLa cells, using MaxiK α antibody.