

MAO-A rabbit pAb**Cat#: orb765618 (Manual)**

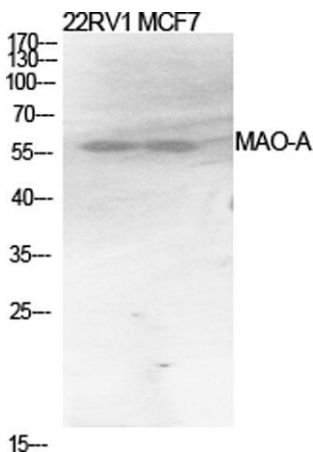
For research use only. Not intended for diagnostic use.

Product Name	MAO-A rabbit pAb
Host species	Rabbit
Applications	WB;IHC;IF;ELISA
Species Cross-Reactivity	Human;Mouse;Rat
Recommended dilutions	Western Blot: 1/500 - 1/2000. Immunohistochemistry: 1/100 - 1/300. ELISA: 1/20000. Not yet tested in other applications.
Immunogen	The antiserum was produced against synthesized peptide derived from human MAO-A. AA range:298-347
Specificity	MAO-A Polyclonal Antibody detects endogenous levels of MAO-A protein.
Formulation	Liquid in PBS containing 50% glycerol, 0.5% BSA and 0.02% sodium azide..
Storage	Store at -20°C. Avoid repeated freeze-thaw cycles.
Protein Name	Amine oxidase [flavin-containing] A
Gene Name	MAOA
Cellular localization	Mitochondrion outer membrane ; Single-pass type IV membrane protein ; Cytoplasmic side .
Purification	The antibody was affinity-purified from rabbit antiserum by affinity-chromatography using epitope-specific immunogen.
Clonality	Polyclonal

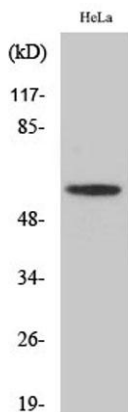
Concentration	1 mg/ml
Observed band	61kD
Human Gene ID	4128
Human Swiss-Prot Number	P21397
Alternative Names	MAOA; Amine oxidase [flavin-containing] A; Monoamine oxidase type A; MAO-A

Background

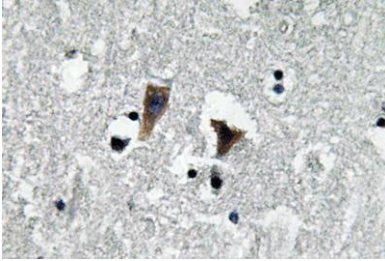
This gene is one of two neighboring gene family members that encode mitochondrial enzymes which catalyze the oxidative deamination of amines, such as dopamine, norepinephrine, and serotonin. Mutation of this gene results in Brunner syndrome. This gene has also been associated with a variety of other psychiatric disorders, including antisocial behavior. Alternatively spliced transcript variants encoding multiple isoforms have been observed. [provided by RefSeq, Jul 2012],



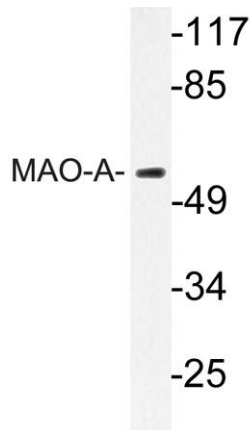
Western Blot analysis of various cells using MAO-A Polyclonal Antibody diluted at 1:1000



Western Blot analysis of HeLa cells using MAO-A Polyclonal Antibody diluted at 1:1000



Immunohistochemistry analysis of MAO-A antibody in paraffin-embedded human brain tissue.



Western blot analysis of lysate from HeLa cells, using MAO-A antibody.