

Mammaglobin B rabbit pAb

Cat#: orb765617 (Manual)

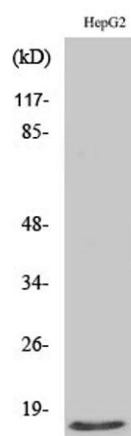
For research use only. Not intended for diagnostic use.

Product Name	Mammaglobin B rabbit pAb
Host species	Rabbit
Applications	WB;IHC;IF;ELISA
Species Cross-Reactivity	Human;Rat;Mouse;
Recommended dilutions	Western Blot: 1/500 - 1/2000. Immunohistochemistry: 1/100 - 1/300. Immunofluorescence: 1/200 - 1/1000. ELISA: 1/20000. Not yet tested in other applications.
Immunogen	The antiserum was produced against synthesized peptide derived from human Mammaglobin B. AA range:10-59
Specificity	Mammaglobin B Polyclonal Antibody detects endogenous levels of Mammaglobin B protein.
Formulation	Liquid in PBS containing 50% glycerol, 0.5% BSA and 0.02% sodium azide..
Storage	Store at -20°C. Avoid repeated freeze-thaw cycles.
Protein Name	Mammaglobin-B
Gene Name	SCGB2A1
Cellular localization	Secreted .
Purification	The antibody was affinity-purified from rabbit antiserum by affinity-chromatography using epitope-specific immunogen.
Clonality	Polyclonal

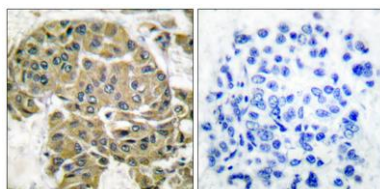
Concentration	1 mg/ml
Observed band	15kD
Human Gene ID	4246
Human Swiss-Prot Number	O75556
Alternative Names	SCGB2A1; LIPHC; MGB2; UGB3; Mammaglobin-B; Lacryglobin; Lipophilin-C; Mammaglobin-2; Secretoglobin family 2A member 1

Background

function: May bind androgens and other steroids, may also bind estramustine, a chemotherapeutic agent used for prostate cancer. May be under transcriptional regulation of steroid hormones., mass spectrometry: PubMed:9720917, similarity: Belongs to the secretoglobin family. Lipophilin subfamily., subunit: Heterodimer of a lipophilin A and a lipophilin C (mammaglobin B) monomer associated head to head., tissue specificity: Expressed in thymus, trachea, kidney, steroid responsive tissues (prostate, testis, uterus, breast and ovary) and salivary gland.,



Western Blot analysis of various cells using Mammaglobin B Polyclonal Antibody



Immunohistochemistry analysis of paraffin-embedded human breast carcinoma tissue, using Mammaglobin B Antibody. The picture on the right is blocked with the synthesized peptide.

