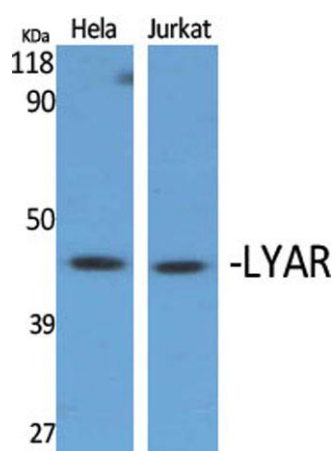


**LYAR rabbit pAb****Cat#: orb765608 (Manual)**

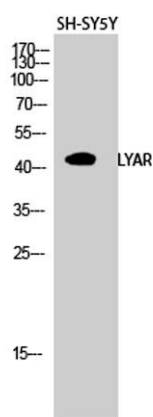
For research use only. Not intended for diagnostic use.

<b>Product Name</b>	LYAR rabbit pAb
<b>Host species</b>	Rabbit
<b>Applications</b>	WB;IHC;IF;ELISA
<b>Species Cross-Reactivity</b>	Human;Rat;Mouse;
<b>Recommended dilutions</b>	Western Blot: 1/500 - 1/2000. Immunohistochemistry: 1/100 - 1/300. ELISA: 1/10000. Not yet tested in other applications.
<b>Immunogen</b>	The antiserum was produced against synthesized peptide derived from human LYAR. AA range:241-290
<b>Specificity</b>	LYAR Polyclonal Antibody detects endogenous levels of LYAR protein.
<b>Formulation</b>	Liquid in PBS containing 50% glycerol, 0.5% BSA and 0.02% sodium azide..
<b>Storage</b>	Store at -20°C. Avoid repeated freeze-thaw cycles.
<b>Protein Name</b>	Cell growth-regulating nucleolar protein
<b>Gene Name</b>	LYAR
<b>Cellular localization</b>	Nucleus . Nucleus, nucleolus . Cytoplasm . Cell projection, cilium, photoreceptor outer segment . Component of pre-ribosomal particles, including pre-40S, pre-60S and pre-90S (PubMed:24495227). Associated with cytoplasmic ribosomes, but not polysomes, as a component of the 60S subunit (PubMed:24990247). In the retina, predominantly expressed in photoreceptor outer segments (By similarity). In the nucleolus, colocalizes with nucleolin/NCL, therefore may reside in the dense fibrillar component (DFC) (By similarity). .

<b>Purification</b>	The antibody was affinity-purified from rabbit antiserum by affinity-chromatography using epitope-specific immunogen.
<b>Clonality</b>	Polyclonal
<b>Concentration</b>	1 mg/ml
<b>Observed band</b>	44kD
<b>Human Gene ID</b>	55646
<b>Human Swiss-Prot Number</b>	Q9NX58
<b>Alternative Names</b>	LYAR; PNAS-5; Cell growth-regulating nucleolar protein
<b>Background</b>	similarity:Contains 2 C2HC-type zinc fingers.,



Western Blot analysis of various cells using LYAR Polyclonal Antibody diluted at 1:2000 cells nucleus extracted by Minute TM Cytoplasmic and Nuclear Fractionation kit (SC-003, Invent biotech, MN, USA).



Western Blot analysis of SH-SY5Y cells using LYAR Polyclonal Antibody diluted at 1:2000 cells nucleus extracted by Minute TM Cytoplasmic and Nuclear Fractionation kit (SC-003, Invent biotech, MN, USA).

