

LRRC41 rabbit pAb**Cat#: orb765601 (Manual)**

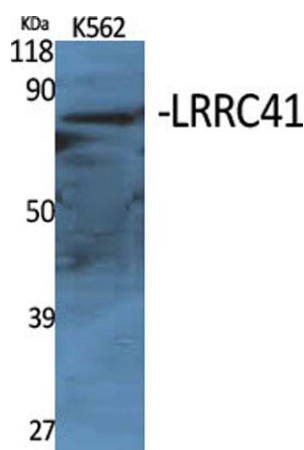
For research use only. Not intended for diagnostic use.

Product Name	LRRC41 rabbit pAb
Host species	Rabbit
Applications	WB;IHC;IF;ELISA
Species Cross-Reactivity	Human;Mouse;Rat
Recommended dilutions	Western Blot: 1/500 - 1/2000. Immunohistochemistry: 1/100 - 1/300. ELISA: 1/5000. Not yet tested in other applications.
Immunogen	The antiserum was produced against synthesized peptide derived from human LRRC41. AA range:391-440
Specificity	LRRC41 Polyclonal Antibody detects endogenous levels of LRRC41 protein.
Formulation	Liquid in PBS containing 50% glycerol, 0.5% BSA and 0.02% sodium azide..
Storage	Store at -20°C. Avoid repeated freeze-thaw cycles.
Protein Name	Leucine-rich repeat-containing protein 41
Gene Name	LRRC41
Cellular localization	nucleus,cytoplasm,membrane,
Purification	The antibody was affinity-purified from rabbit antiserum by affinity-chromatography using epitope-specific immunogen.
Clonality	Polyclonal

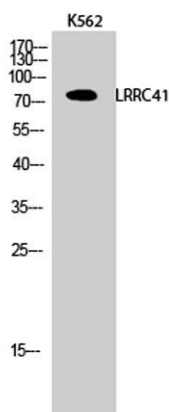
Concentration	1 mg/ml
Observed band	80kD
Human Gene ID	10489
Human Swiss-Prot Number	Q15345
Alternative Names	LRRC41; MUF1; PP7759; Leucine-rich repeat-containing protein 41; Protein Muf1

Background

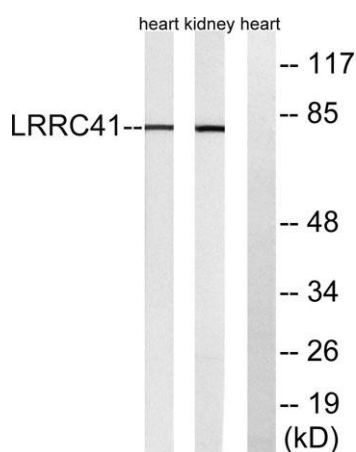
caution:It is uncertain whether Met-1 or Met-23 is the initiator.,domain:The elongin BC complex binding domain is also known as BC-box with the consensus [APST]-L-x(3)-C-x(3)-[AILV].,function:Probable substrate recognition component of an ECS (Elongin BC-CUL2/5-SOCS-box protein) E3 ubiquitin ligase complex which mediates the ubiquitination and subsequent proteasomal degradation of target proteins.,pathway:Protein modification; protein ubiquitination.,PTM:Phosphorylated upon DNA damage, probably by ATM or ATR.,sequence caution:Translation N-terminally extended.,similarity:Contains 7 LRR (leucine-rich) repeats.,subunit:Part of an E3 ubiquitin-protein ligase complex with Elongin BC (TCEB1 and TCEB2), RBX1 and CUL5. Component of a probable ECS(LRRC41) complex which contains CUL5, RNF7/RBX2, Elongin BC and LRRC41. Interacts with CUL5, RNF7, TCEB1 and TCEB2.,



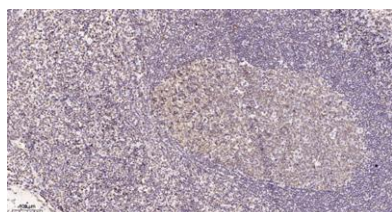
Western Blot analysis of various cells using LRRC41 Polyclonal Antibody



Western Blot analysis of K562 cells using LRRC41 Polyclonal Antibody



Western blot analysis of lysates from rat kidney and rat heart cells, using LRRC41 Antibody. The lane on the right is blocked with the synthesized peptide.



Immunohistochemical analysis of paraffin-embedded human tonsil. 1, Tris-EDTA, pH 9.0 was used for antigen retrieval. 2 Antibody was diluted at 1:200 (4°C overnight). 3, Secondary antibody was diluted at 1:200 (room temperature, 45 min).