

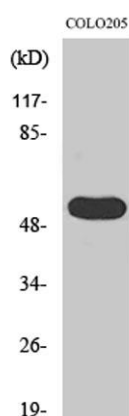
LPD lipase rabbit pAb**Cat#: orb765598 (Manual)**

For research use only. Not intended for diagnostic use.

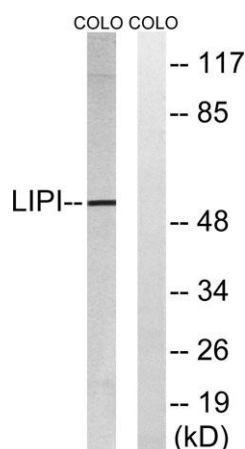
Product Name	LPD lipase rabbit pAb
Host species	Rabbit
Applications	WB;IHC;IF;ELISA
Species Cross-Reactivity	Human;Rat;Mouse;
Recommended dilutions	Western Blot: 1/500 - 1/2000. Immunohistochemistry: 1/100 - 1/300. ELISA: 1/10000. Not yet tested in other applications.
Immunogen	The antiserum was produced against synthesized peptide derived from human LIPI. AA range:289-338
Specificity	LPD lipase Polyclonal Antibody detects endogenous levels of LPD lipase protein.
Formulation	Liquid in PBS containing 50% glycerol, 0.5% BSA and 0.02% sodium azide..
Storage	Store at -20°C. Avoid repeated freeze-thaw cycles.
Protein Name	Lipase member I
Gene Name	LIPI
Cellular localization	[Isoform 1]: Cell membrane . Secreted . May associate with lipid draft. . ; [Isoform 2]: Cell membrane . Secreted . May associate with lipid draft. .
Purification	The antibody was affinity-purified from rabbit antiserum by affinity-chromatography using epitope-specific immunogen.
Clonality	Polyclonal

Concentration	1 mg/ml
Observed band	53kD
Human Gene ID	149998
Human Swiss-Prot Number	Q6XZB0
Alternative Names	LIPI; LPDL; PRED5; Lipase member I; LIPI; Cancer/testis antigen 17; CT17; LPD lipase; Membrane-associated phosphatidic acid-selective phospholipase A1-beta; mPA-PLA1 beta

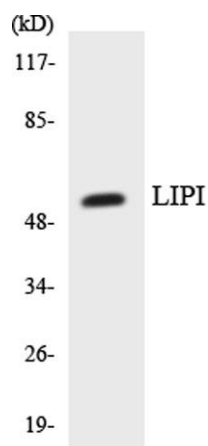
Background The protein encoded by this gene is a phospholipase that hydrolyzes phosphatidic acid to produce lysophosphatidic acid. Defects in this gene are a cause of susceptibility to familial hypertriglyceridemia. This gene is also expressed at high levels in Ewing family tumor cells. Alternative splicing results in multiple transcript variants. [provided by RefSeq, Dec 2014],



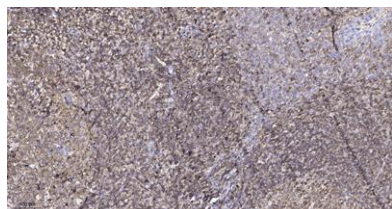
Western Blot analysis of various cells using LPD lipase Polyclonal Antibody



Western blot analysis of lysates from COLO cells, using LIPI Antibody. The lane on the right is blocked with the synthesized peptide.



Western blot analysis of the lysates from HepG2 cells using LIPI antibody.



Immunohistochemical analysis of paraffin-embedded human tonsil. 1, Antibody was diluted at 1:200(4° overnight). 2, Tris-EDTA,pH9.0 was used for antigen retrieval. 3,Secondary antibody was diluted at 1:200(room temperature, 45min).