

## LOK rabbit pAb

**Cat#: orb765596 (Manual)**

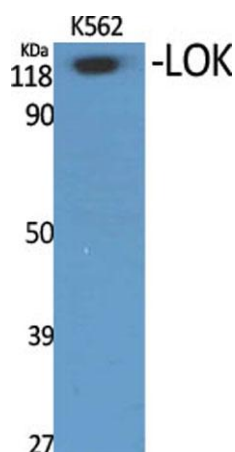
For research use only. Not intended for diagnostic use.

<b>Product Name</b>	LOK rabbit pAb
<b>Host species</b>	Rabbit
<b>Applications</b>	WB;ELISA;IHC
<b>Species Cross-Reactivity</b>	Human;Rat;Mouse;
<b>Recommended dilutions</b>	WB 1:500-2000;IHC-p 1:50-300; ELISA 2000-20000
<b>Immunogen</b>	The antiserum was produced against synthesized peptide derived from human STK10. AA range:491-540
<b>Specificity</b>	LOK Polyclonal Antibody detects endogenous levels of LOK protein.
<b>Formulation</b>	Liquid in PBS containing 50% glycerol, 0.5% BSA and 0.02% sodium azide..
<b>Storage</b>	Store at -20°C. Avoid repeated freeze-thaw cycles.
<b>Protein Name</b>	Serine/threonine-protein kinase 10
<b>Gene Name</b>	STK10
<b>Cellular localization</b>	Cell membrane ; Peripheral membrane protein .
<b>Purification</b>	The antibody was affinity-purified from rabbit antiserum by affinity-chromatography using epitope-specific immunogen.
<b>Clonality</b>	Polyclonal

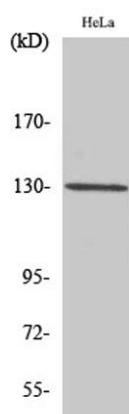
<b>Concentration</b>	1 mg/ml
<b>Observed band</b>	120kD
<b>Human Gene ID</b>	6793
<b>Human Swiss-Prot Number</b>	O94804
<b>Alternative Names</b>	STK10; LOK; Serine/threonine-protein kinase 10; Lymphocyte-oriented kinase

#### Background

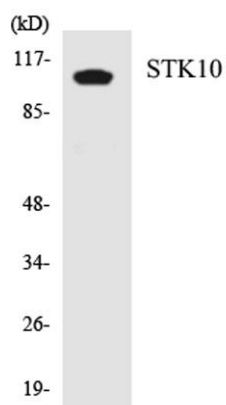
This gene encodes a member of the Ste20 family of serine/threonine protein kinases, and is similar to several known polo-like kinase kinases. The protein can associate with and phosphorylate polo-like kinase 1, and overexpression of a kinase-dead version of the protein interferes with normal cell cycle progression. The kinase can also negatively regulate interleukin 2 expression in T-cells via the mitogen activated protein kinase kinase 1 pathway. [provided by RefSeq, Jul 2008],



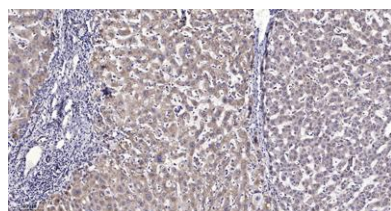
Western Blot analysis of various cells using LOK Polyclonal Antibody



Western Blot analysis of HuvEc cells using LOK Polyclonal Antibody



Western blot analysis of the lysates from HT-29 cells using STK10 antibody.



Immunohistochemical analysis of paraffin-embedded human liver cancer. 1, Antibody was diluted at 1:200(4° overnight). 2, Tris-EDTA,pH9.0 was used for antigen retrieval. 3,Secondary antibody was diluted at 1:200(room temperature, 45min).