

LMO4 rabbit pAb**Cat#: orb765595 (Manual)**

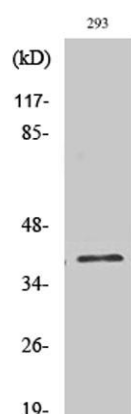
For research use only. Not intended for diagnostic use.

Product Name	LMO4 rabbit pAb
Host species	Rabbit
Applications	WB;IHC;IF;ELISA
Species Cross-Reactivity	Human;Mouse;Rat
Recommended dilutions	Western Blot: 1/500 - 1/2000. Immunohistochemistry: 1/100 - 1/300. Immunofluorescence: 1/200 - 1/1000. ELISA: 1/20000. Not yet tested in other applications.
Immunogen	The antiserum was produced against synthesized peptide derived from human LMO4. AA range:116-165
Specificity	LMO4 Polyclonal Antibody detects endogenous levels of LMO4 protein.
Formulation	Liquid in PBS containing 50% glycerol, 0.5% BSA and 0.02% sodium azide..
Storage	Store at -20°C. Avoid repeated freeze-thaw cycles.
Protein Name	LIM domain transcription factor LMO4
Gene Name	LMO4
Cellular localization	transcription factor complex,cell leading edge,
Purification	The antibody was affinity-purified from rabbit antiserum by affinity-chromatography using epitope-specific immunogen.
Clonality	Polyclonal

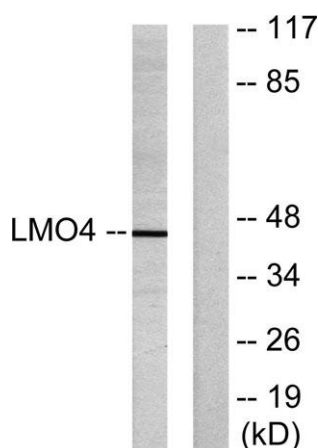
Concentration	1 mg/ml
Observed band	44kD
Human Gene ID	8543
Human Swiss-Prot Number	P61968
Alternative Names	LMO4; LIM domain transcription factor LMO4; Breast tumor autoantigen; LIM domain only protein 4; LMO-4

Background

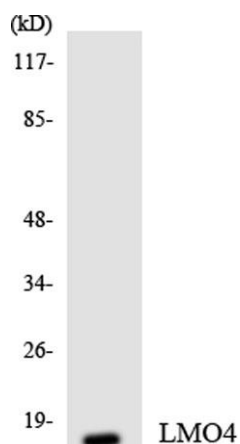
LIM domain only 4(LMO4) Homo sapiens This gene encodes a cysteine-rich protein that contains two LIM domains but lacks a DNA-binding homeodomain. The encoded protein may play a role as a transcriptional regulator or as an oncogene. [provided by RefSeq, Aug 2008],



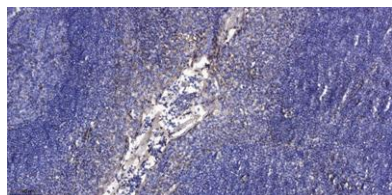
Western Blot analysis of various cells using LMO4 Polyclonal Antibody cells nucleus extracted by Minute TM Cytoplasmic and Nuclear Fractionation kit (SC-003, Invent biotech, MN, USA).



Western blot analysis of lysates from 293 cells, using LMO4 Antibody. The lane on the right is blocked with the synthesized peptide.



Western blot analysis of the lysates from HepG2 cells using LMO4 antibody.



Immunohistochemical analysis of paraffin-embedded human tonsil. 1, Antibody was diluted at 1:200(4° overnight). 2, Tris-EDTA,pH9.0 was used for antigen retrieval. 3,Secondary antibody was diluted at 1:200(room temperature, 30min).