

LMO3 rabbit pAb**Cat#: orb765594 (Manual)**

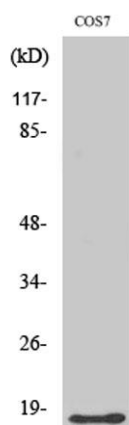
For research use only. Not intended for diagnostic use.

Product Name	LMO3 rabbit pAb
Host species	Rabbit
Applications	WB;IHC;IF;ELISA
Species Cross-Reactivity	Human;Mouse;Rat;Monkey
Recommended dilutions	Western Blot: 1/500 - 1/2000. Immunohistochemistry: 1/100 - 1/300. ELISA: 1/10000. Not yet tested in other applications.
Immunogen	The antiserum was produced against synthesized peptide derived from human LMO3. AA range:96-145
Specificity	LMO3 Polyclonal Antibody detects endogenous levels of LMO3 protein.
Formulation	Liquid in PBS containing 50% glycerol, 0.5% BSA and 0.02% sodium azide..
Storage	Store at -20°C. Avoid repeated freeze-thaw cycles.
Protein Name	LIM domain only protein 3
Gene Name	LMO3
Cellular localization	cytoplasm,
Purification	The antibody was affinity-purified from rabbit antiserum by affinity-chromatography using epitope-specific immunogen.
Clonality	Polyclonal

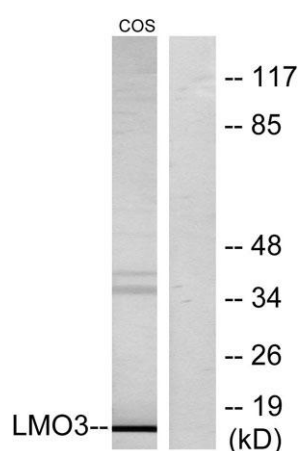
Concentration	1 mg/ml
Observed band	17kD
Human Gene ID	55885
Human Swiss-Prot Number	Q8TAP4
Alternative Names	LMO3; RBTN3; RBTN2; RHOM3; LIM domain only protein 3; LMO-3; Neuronal-specific transcription factor DAT1; Rhombotin-3

Background

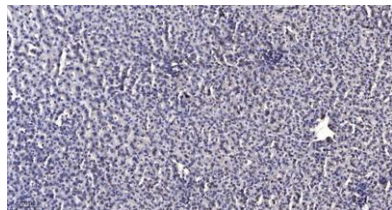
LIM domain only 3(LMO3) Homo sapiens The protein encoded by this gene belongs to the rhombotin family of cysteine-rich LIM domain oncogenes. This gene is predominantly expressed in the brain. Related family members, LMO1 and LMO2 on chromosome 11, have been reported to be involved in chromosomal translocations in T-cell leukemia. Many alternatively spliced transcript variants have been found for this gene. [provided by RefSeq, Aug 2011],



Western Blot analysis of various cells using LMO3 Polyclonal Antibody



Western blot analysis of lysates from COS7 cells, using LMO3 Antibody. The lane on the right is blocked with the synthesized peptide.



Immunohistochemical analysis of paraffin-embedded human liver cancer. 1, Antibody was diluted at 1:200(4° overnight). 2, Tris-EDTA,pH9.0 was used for antigen retrieval. 3,Secondary antibody was diluted at 1:200(room temperature, 45min).