

## LIR-6 rabbit pAb

**Cat#: orb765590 (Manual)**

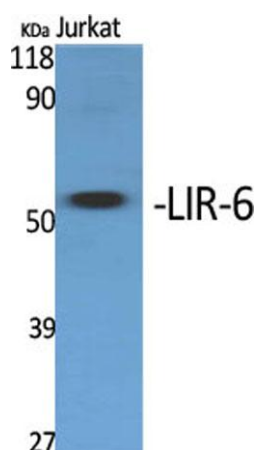
For research use only. Not intended for diagnostic use.

<b>Product Name</b>	LIR-6 rabbit pAb
<b>Host species</b>	Rabbit
<b>Applications</b>	WB;IHC
<b>Species Cross-Reactivity</b>	Human;Rat;Mouse;
<b>Recommended dilutions</b>	WB 1:500-2000;IHC-p 1:50-300
<b>Immunogen</b>	The antiserum was produced against synthesized peptide derived from human LILRA1. AA range:53-102
<b>Specificity</b>	LIR-6 Polyclonal Antibody detects endogenous levels of LIR-6 protein.
<b>Formulation</b>	Liquid in PBS containing 50% glycerol, 0.5% BSA and 0.02% sodium azide..
<b>Storage</b>	Store at -20°C. Avoid repeated freeze-thaw cycles.
<b>Protein Name</b>	Leukocyte immunoglobulin-like receptor subfamily A member 1
<b>Gene Name</b>	LILRA1
<b>Cellular localization</b>	Membrane; Single-pass type I membrane protein.
<b>Purification</b>	The antibody was affinity-purified from rabbit antiserum by affinity-chromatography using epitope-specific immunogen.
<b>Clonality</b>	Polyclonal

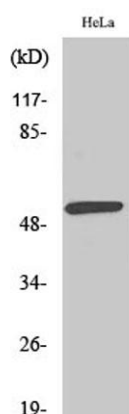
<b>Concentration</b>	1 mg/ml
<b>Observed band</b>	53kD
<b>Human Gene ID</b>	11024
<b>Human Swiss-Prot Number</b>	O75019
<b>Alternative Names</b>	LILRA1; LIR6; Leukocyte immunoglobulin-like receptor subfamily A member 1; CD85 antigen-like family member I; Leukocyte immunoglobulin-like receptor 6; LIR-6; CD antigen CD85i

**Background**

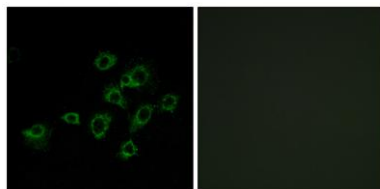
This gene encodes an activating member of the leukocyte immunoglobulin-like receptor (LIR) family, which is found in a gene cluster at chromosomal region 19q13.4. The encoded protein is predominantly expressed in B cells, interacts with major histocompatibility complex class I ligands, and contributes to the regulation of immune responses. Alternative splicing results in multiple transcript variants encoding different isoforms. [provided by RefSeq, May 2013],



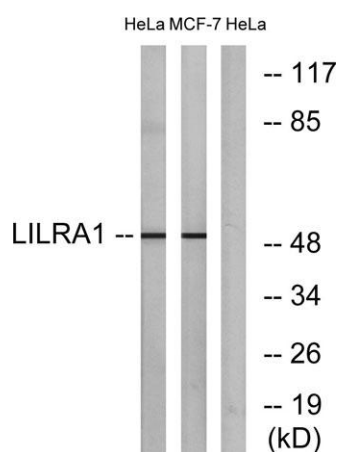
Western Blot analysis of various cells using LIR-6 Polyclonal Antibody



Western Blot analysis of MCF7 cells using LIR-6 Polyclonal Antibody



**Immunofluorescence analysis of A549 cells, using LILRA1 Antibody. The picture on the right is blocked with the synthesized peptide.**



**Western blot analysis of lysates from HeLa and MCF-7 cells, using LILRA1 Antibody. The lane on the right is blocked with the synthesized peptide.**