

**LASS4 rabbit pAb****Cat#: orb765576 (Manual)**

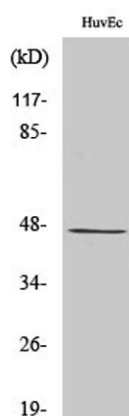
For research use only. Not intended for diagnostic use.

<b>Product Name</b>	LASS4 rabbit pAb
<b>Host species</b>	Rabbit
<b>Applications</b>	WB;IHC;IF;ELISA
<b>Species Cross-Reactivity</b>	Human;Rat;Mouse;
<b>Recommended dilutions</b>	Western Blot: 1/500 - 1/2000. Immunohistochemistry: 1/100 - 1/300. ELISA: 1/10000. Not yet tested in other applications.
<b>Immunogen</b>	The antiserum was produced against synthesized peptide derived from human LASS4. AA range:41-90
<b>Specificity</b>	LASS4 Polyclonal Antibody detects endogenous levels of LASS4 protein.
<b>Formulation</b>	Liquid in PBS containing 50% glycerol, 0.5% BSA and 0.02% sodium azide..
<b>Storage</b>	Store at -20°C. Avoid repeated freeze-thaw cycles.
<b>Protein Name</b>	Ceramide synthase 4
<b>Gene Name</b>	CERS4
<b>Cellular localization</b>	Endoplasmic reticulum membrane ; Multi-pass membrane protein .
<b>Purification</b>	The antibody was affinity-purified from rabbit antiserum by affinity-chromatography using epitope-specific immunogen.
<b>Clonality</b>	Polyclonal

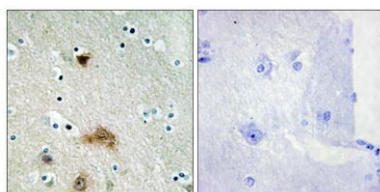
<b>Concentration</b>	1 mg/ml
<b>Observed band</b>	46kD
<b>Human Gene ID</b>	79603
<b>Human Swiss-Prot Number</b>	Q9HA82
<b>Alternative Names</b>	CERS4; LASS4; Ceramide synthase 4; CerS4; LAG1 longevity assurance homolog 4

### Background

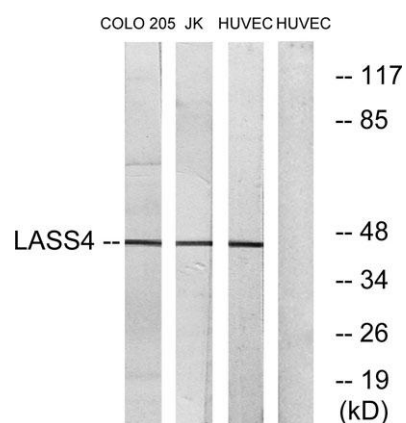
function: May be either a bona fide (dihydro)ceramide synthase or a modulator of its activity. When overexpressed in cells is involved in the production of sphingolipids containing different fatty acid donors (N-linked stearyl- (C18) or arachidoyl- (C20) ceramides) in a fumonisin B1-independent manner., similarity: Contains 1 homeobox DNA-binding domain., similarity: Contains 1 TLC (TRAM/LAG1/CLN8) domain.,



**Western Blot analysis of various cells using LASS4 Polyclonal Antibody**



**Immunohistochemistry analysis of paraffin-embedded human brain tissue, using LASS4 Antibody. The picture on the right is blocked with the synthesized peptide.**



**Western blot analysis of lysates from HUVEC, COLO, and Jurkat cells, using LASS4 Antibody. The lane on the right is blocked with the synthesized peptide.**