

IP3KA rabbit pAb

Cat#: orb765510 (Manual)

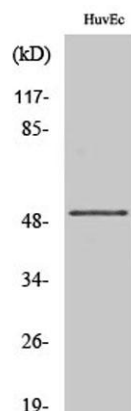
For research use only. Not intended for diagnostic use.

Product Name	IP3KA rabbit pAb
Host species	Rabbit
Applications	WB;ELISA;IHC
Species Cross-Reactivity	Human;Mouse;Rat
Recommended dilutions	WB 1:500-2000;IHC-p 1:50-300; ELISA 2000-20000
Immunogen	The antiserum was produced against synthesized peptide derived from human IP3KA. AA range:396-445
Specificity	IP3KA Polyclonal Antibody detects endogenous levels of IP3KA protein.
Formulation	Liquid in PBS containing 50% glycerol, 0.5% BSA and 0.02% sodium azide..
Storage	Store at -20°C. Avoid repeated freeze-thaw cycles.
Protein Name	Inositol-trisphosphate 3-kinase A
Gene Name	ITPKA
Cellular localization	Cytoplasm, cytoskeleton .
Purification	The antibody was affinity-purified from rabbit antiserum by affinity-chromatography using epitope-specific immunogen.
Clonality	Polyclonal

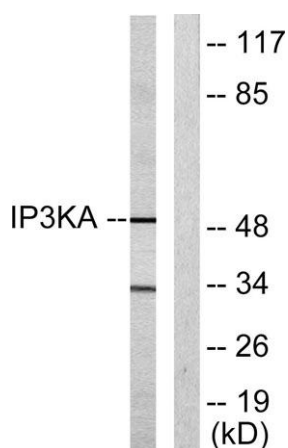
Concentration	1 mg/ml
Observed band	52kD
Human Gene ID	3706
Human Swiss-Prot Number	P23677
Alternative Names	ITPKA; Inositol-trisphosphate 3-kinase A; Inositol 1; 4,5-trisphosphate 3-kinase A; IP3 3-kinase A; IP3K A; InsP 3-kinase A

Background

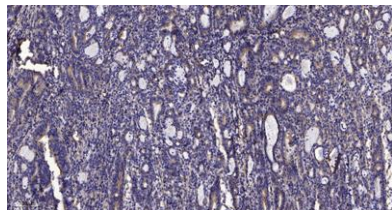
Regulates inositol phosphate metabolism by phosphorylation of second messenger inositol 1,4,5-trisphosphate to Ins(1,3,4,5)P₄. The activity of the inositol 1,4,5-trisphosphate 3-kinase is responsible for regulating the levels of a large number of inositol polyphosphates that are important in cellular signaling. Both calcium/calmodulin and protein phosphorylation mechanisms control its activity. It is also a substrate for the cyclic AMP-dependent protein kinase, calcium/calmodulin-dependent protein kinase II, and protein kinase C in vitro.[provided by RefSeq, Apr 2011],



Western Blot analysis of various cells using IP3KA Polyclonal Antibody



Western blot analysis of lysates from HUVEC cells, using IP3KA Antibody. The lane on the right is blocked with the synthesized peptide.



Immunohistochemical analysis of paraffin-embedded human Gastric adenocarcinoma. 1, Antibody was diluted at 1:200(4° overnight). 2, Tris-EDTA,pH9.0 was used for antigen retrieval. 3,Secondary antibody was diluted at 1:200(room temperature, 45min).