

IL-11R α rabbit pAb**Cat#: orb765482 (Manual)**

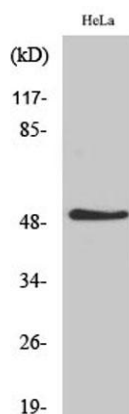
For research use only. Not intended for diagnostic use.

Product Name	IL-11R α rabbit pAb
Host species	Rabbit
Applications	WB;ELISA
Species Cross-Reactivity	Human;Rat;Mouse;
Recommended dilutions	Western Blot: 1/500 - 1/2000. ELISA: 1/20000. Not yet tested in other applications.
Immunogen	Synthesized peptide derived from IL-11R α . at AA range: 300-380
Specificity	IL-11R α Polyclonal Antibody detects endogenous levels of IL-11R α protein.
Formulation	Liquid in PBS containing 50% glycerol, 0.5% BSA and 0.02% sodium azide..
Storage	Store at -20°C. Avoid repeated freeze-thaw cycles.
Protein Name	Interleukin-11 receptor subunit alpha
Gene Name	IL11RA
Cellular localization	[Interleukin-11 receptor subunit alpha]: Membrane ; Single-pass type I membrane protein .; [Soluble interleukin-11 receptor subunit alpha]: Secreted .; [Isoform HCR2]: Secreted .
Purification	The antibody was affinity-purified from rabbit antiserum by affinity-chromatography using epitope-specific immunogen.

Clonality	Polyclonal
Concentration	1 mg/ml
Observed band	45kD
Human Gene ID	3590
Human Swiss-Prot Number	Q14626
Alternative Names	IL11RA; Interleukin-11 receptor subunit alpha; IL-11 receptor subunit alpha; IL-11R subunit alpha; IL-11R-alpha; IL-11RA

Background

Interleukin 11 is a stromal cell-derived cytokine that belongs to a family of pleiotropic and redundant cytokines that use the gp130 transducing subunit in their high affinity receptors. This gene encodes the IL-11 receptor, which is a member of the hematopoietic cytokine receptor family. This particular receptor is very similar to ciliary neurotrophic factor, since both contain an extracellular region with a 2-domain structure composed of an immunoglobulin-like domain and a cytokine receptor-like domain. Multiple alternatively spliced transcript variants have been found for this gene. [provided by RefSeq, Jun 2012],



Western Blot analysis of various cells using IL-11Ra Polyclonal Antibody