

IFN- γ rabbit pAb**Cat#: orb765468 (Manual)**

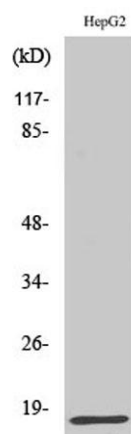
For research use only. Not intended for diagnostic use.

Product Name	IFN- γ rabbit pAb
Host species	Rabbit
Applications	WB;IHC;IF;ELISA
Species Cross-Reactivity	Human;Rat;Mouse;
Recommended dilutions	Western Blot: 1/500 - 1/2000. Immunohistochemistry: 1/100 - 1/300. ELISA: 1/40000. Not yet tested in other applications.
Immunogen	The antiserum was produced against synthesized peptide derived from human IFN-gamma. AA range:20-69
Specificity	IFN- γ Polyclonal Antibody detects endogenous levels of IFN- γ protein.
Formulation	Liquid in PBS containing 50% glycerol, 0.5% BSA and 0.02% sodium azide..
Storage	Store at -20°C. Avoid repeated freeze-thaw cycles.
Protein Name	Interferon gamma
Gene Name	IFNG
Cellular localization	Secreted.
Purification	The antibody was affinity-purified from rabbit antiserum by affinity-chromatography using epitope-specific immunogen.
Clonality	Polyclonal

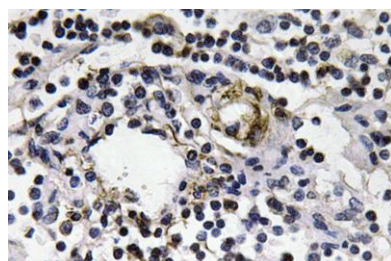
Concentration	1 mg/ml
Observed band	17kD
Human Gene ID	3458
Human Swiss-Prot Number	P01579
Alternative Names	IFNG; Interferon gamma; IFN-gamma; Immune interferon

Background

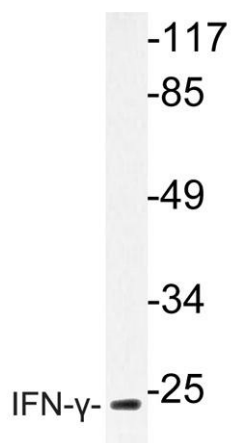
This gene encodes a soluble cytokine that is a member of the type II interferon class. The encoded protein is secreted by cells of both the innate and adaptive immune systems. The active protein is a homodimer that binds to the interferon gamma receptor which triggers a cellular response to viral and microbial infections. Mutations in this gene are associated with an increased susceptibility to viral, bacterial and parasitic infections and to several autoimmune diseases. [provided by RefSeq, Dec 2015],



Western Blot analysis of various cells using IFN- γ Polyclonal Antibody diluted at 1:1000



Immunohistochemistry analysis of IFN- γ antibody in paraffin-embedded human lymph node tissue.



Western blot analysis of lysate from HepG2 cells, using IFN- γ antibody.