

**IARS2 rabbit pAb****Cat#: orb765463 (Manual)**

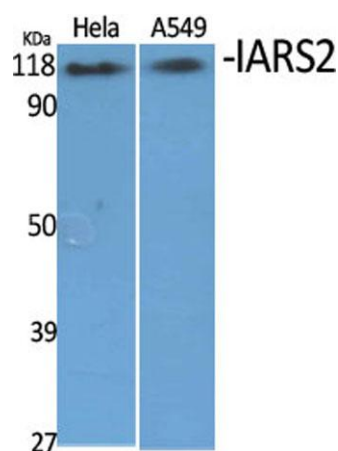
For research use only. Not intended for diagnostic use.

<b>Product Name</b>	IARS2 rabbit pAb
<b>Host species</b>	Rabbit
<b>Applications</b>	WB;IHC;IF;ELISA
<b>Species Cross-Reactivity</b>	Human;Mouse;Monkey
<b>Recommended dilutions</b>	Western Blot: 1/500 - 1/2000. Immunohistochemistry: 1/100 - 1/300. Immunofluorescence: 1/200 - 1/1000. ELISA: 1/20000. Not yet tested in other applications.
<b>Immunogen</b>	The antiserum was produced against synthesized peptide derived from human IARS2. AA range:71-120
<b>Specificity</b>	IARS2 Polyclonal Antibody detects endogenous levels of IARS2 protein.
<b>Formulation</b>	Liquid in PBS containing 50% glycerol, 0.5% BSA and 0.02% sodium azide..
<b>Storage</b>	Store at -20°C. Avoid repeated freeze-thaw cycles.
<b>Protein Name</b>	Isoleucine--tRNA ligase mitochondrial
<b>Gene Name</b>	IARS2
<b>Cellular localization</b>	Mitochondrion matrix .
<b>Purification</b>	The antibody was affinity-purified from rabbit antiserum by affinity-chromatography using epitope-specific immunogen.
<b>Clonality</b>	Polyclonal

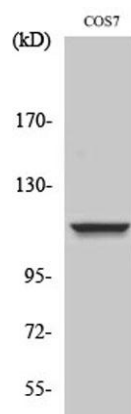
<b>Concentration</b>	1 mg/ml
<b>Observed band</b>	114kD
<b>Human Gene ID</b>	55699
<b>Human Swiss-Prot Number</b>	Q9NSE4
<b>Alternative Names</b>	IARS2; Isoleucine--tRNA ligase; mitochondrial; Isoleucyl-tRNA synthetase; IleRS

### Background

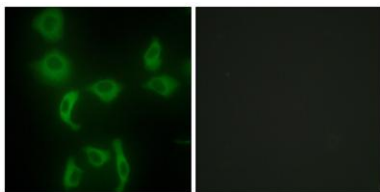
Aminoacyl-tRNA synthetases catalyze the aminoacylation of tRNA by their cognate amino acid. Because of their central role in linking amino acids with nucleotide triplets contained in tRNAs, aminoacyl-tRNA synthetases are thought to be among the first proteins that appeared in evolution. Two forms of isoleucine-tRNA synthetase exist, a cytoplasmic form and a mitochondrial form. This gene encodes the mitochondrial isoleucine-tRNA synthetase which belongs to the class-I aminoacyl-tRNA synthetase family. [provided by RefSeq, Dec 2014],



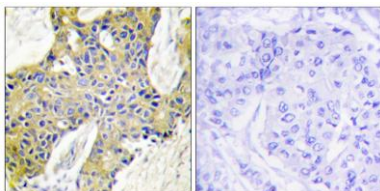
**Western Blot analysis of various cells using IARS2 Polyclonal Antibody diluted at 1:2000**



**Western Blot analysis of NIH-3T3 cells using IARS2 Polyclonal Antibody diluted at 1:2000**



**Immunofluorescence analysis of HepG2 cells, using IARS2 Antibody. The picture on the right is blocked with the synthesized peptide.**



**Immunohistochemistry analysis of paraffin-embedded human breast carcinoma tissue, using IARS2 Antibody. The picture on the right is blocked with the synthesized peptide.**