

**HSP60 rabbit pAb****Cat#: orb765459 (Manual)**

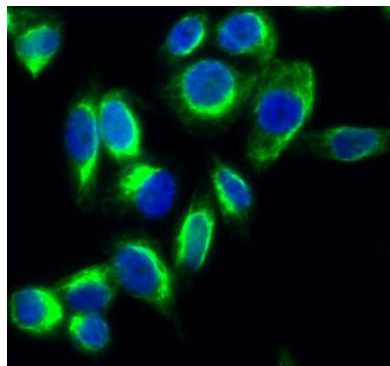
For research use only. Not intended for diagnostic use.

|                                 |  |
|---------------------------------|--|
| <b>Product Name</b>             | HSP60 rabbit pAb   |
| <b>Host species</b>             | Rabbit   |
| <b>Applications</b>             | WB;IHC;IF;ELISA  |
| <b>Species Cross-Reactivity</b> | Human;Mouse;Rat  |
| <b>Recommended dilutions</b>    | Western Blot: 1/500 - 1/2000. Immunohistochemistry: 1/100 - 1/300. Immunofluorescence: 1/200 - 1/1000. ELISA: 1/10000. Not yet tested in other applications. |
| <b>Immunogen</b>                | The antiserum was produced against synthesized peptide derived from human HSP60. AA range:511-560  |
| <b>Specificity</b>              | HSP60 Polyclonal Antibody detects endogenous levels of HSP60 protein.  |
| <b>Formulation</b>              | Liquid in PBS containing 50% glycerol, 0.5% BSA and 0.02% sodium azide..   |
| <b>Storage</b>                  | Store at -20°C. Avoid repeated freeze-thaw cycles.   |
| <b>Protein Name</b>             | 60 kDa heat shock protein mitochondrial  |
| <b>Gene Name</b>                | HSPD1  |
| <b>Cellular localization</b>    | Mitochondrion matrix.  |
| <b>Purification</b>             | The antibody was affinity-purified from rabbit antiserum by affinity-chromatography using epitope-specific immunogen.  |
| <b>Clonality</b>                | Polyclonal   |

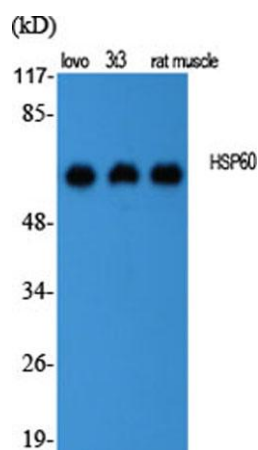
|                                |   |
|--------------------------------|---|
| <b>Concentration</b>           | 1 mg/ml   |
| <b>Observed band</b>           | 68kD  |
| <b>Human Gene ID</b>           | 3329  |
| <b>Human Swiss-Prot Number</b> | P10809  |
| <b>Alternative Names</b>       | HSPD1; HSP60; 60 kDa heat shock protein; mitochondrial; 60 kDa chaperonin; Chaperonin 60; CPN60; Heat shock protein 60; HSP-60; Hsp60; HuCHA60; Mitochondrial matrix protein P1; P60 lymphocyte protein |

### Background

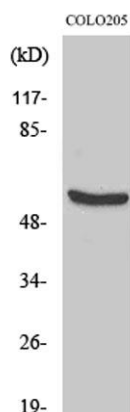
This gene encodes a member of the chaperonin family. The encoded mitochondrial protein may function as a signaling molecule in the innate immune system. This protein is essential for the folding and assembly of newly imported proteins in the mitochondria. This gene is adjacent to a related family member and the region between the 2 genes functions as a bidirectional promoter. Several pseudogenes have been associated with this gene. Two transcript variants encoding the same protein have been identified for this gene. Mutations associated with this gene cause autosomal recessive spastic paraplegia 13. [provided by RefSeq, Jun 2010],



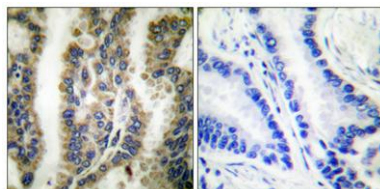
**Immunofluorescence analysis of HeLa cell. 1, HSP60 Polyclonal Antibody (green) was diluted at 1:200 (4° overnight). 2, Goat Anti Rabbit Alexa Fluor 488 Catalog: RS3211 was diluted at 1:1000 (room temperature, 50 min). 3 DAPI (blue) 10 min.**



**Western Blot analysis of various cells using HSP60 Polyclonal Antibody diluted at 1:2000**



**Western Blot analysis of COLO205 cells using HSP60 Polyclonal Antibody diluted at 1:2000**



**Immunohistochemical analysis of paraffin-embedded Human lung cancer. Antibody was diluted at 1:100(4° overnight). High-pressure and temperature Tris-EDTA,pH8.0 was used for antigen retrieval. Negative control (right) obtained from antibody was pre-absorbed by immunogen peptide.**