

**HSP A9 rabbit pAb****Cat#: orb765453 (Manual)**

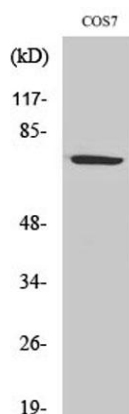
For research use only. Not intended for diagnostic use.

<b>Product Name</b>	HSP A9 rabbit pAb
<b>Host species</b>	Rabbit
<b>Applications</b>	WB;IHC;IF;ELISA
<b>Species Cross-Reactivity</b>	Human;Mouse;Rat;Monkey
<b>Recommended dilutions</b>	Western Blot: 1/500 - 1/2000. Immunohistochemistry: 1/100 - 1/300. Immunofluorescence: 1/200 - 1/1000. ELISA: 1/40000. Not yet tested in other applications.
<b>Immunogen</b>	The antiserum was produced against synthesized peptide derived from human GRP75. AA range:630-679
<b>Specificity</b>	HSP A9 Polyclonal Antibody detects endogenous levels of HSP A9 protein.
<b>Formulation</b>	Liquid in PBS containing 50% glycerol, 0.5% BSA and 0.02% sodium azide..
<b>Storage</b>	Store at -20°C. Avoid repeated freeze-thaw cycles.
<b>Protein Name</b>	Stress-70 protein mitochondrial
<b>Gene Name</b>	HSPA9
<b>Cellular localization</b>	Mitochondrion . Nucleus, nucleolus .
<b>Purification</b>	The antibody was affinity-purified from rabbit antiserum by affinity-chromatography using epitope-specific immunogen.
<b>Clonality</b>	Polyclonal

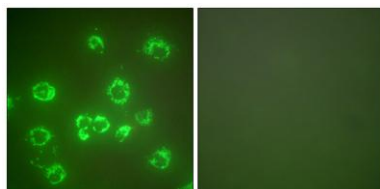
<b>Concentration</b>	1 mg/ml
<b>Observed band</b>	75kD
<b>Human Gene ID</b>	3313
<b>Human Swiss-Prot Number</b>	P38646/Q8N1C8
<b>Alternative Names</b>	HSPA9; GRP75; HSPA9B; Stress-70 protein; mitochondrial; 75 kDa glucose-regulated protein; GRP-75; Heat shock 70 kDa protein 9; Mortalin; MOT; Peptide-binding protein 74; PBP74

**Background**

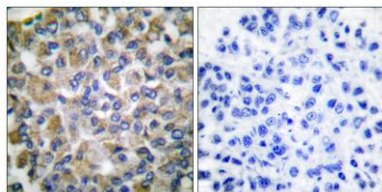
This gene encodes a member of the heat shock protein 70 gene family. The encoded protein is primarily localized to the mitochondria but is also found in the endoplasmic reticulum, plasma membrane and cytoplasmic vesicles. This protein is a heat-shock cognate protein. This protein plays a role in cell proliferation, stress response and maintenance of the mitochondria. A pseudogene of this gene is found on chromosome 2.[provided by RefSeq, May 2010],



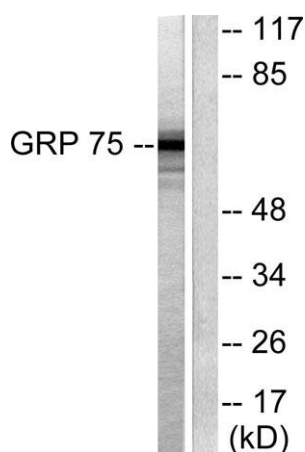
**Western Blot analysis of COS7 cells using HSP A9 Polyclonal Antibody diluted at 1:2000**



**Immunofluorescence analysis of COS7 cells, using GRP75 Antibody. The picture on the right is blocked with the synthesized peptide.**



**Immunohistochemistry analysis of paraffin-embedded human breast carcinoma tissue, using GRP75 Antibody. The picture on the right is blocked with the synthesized peptide.**



**Western blot analysis of lysates from COS7 cells, using GRP75 Antibody. The lane on the right is blocked with the synthesized peptide.**