

**HSF-27 rabbit pAb****Cat#: orb765447 (Manual)**

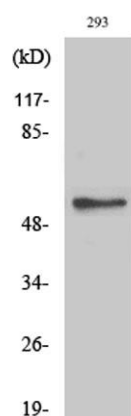
For research use only. Not intended for diagnostic use.

<b>Product Name</b>	HSF-27 rabbit pAb
<b>Host species</b>	Rabbit
<b>Applications</b>	WB;IHC;IF;ELISA
<b>Species Cross-Reactivity</b>	Human;Mouse;Rat
<b>Recommended dilutions</b>	Western Blot: 1/500 - 1/2000. Immunohistochemistry: 1/100 - 1/300. ELISA: 1/5000. Not yet tested in other applications.
<b>Immunogen</b>	The antiserum was produced against synthesized peptide derived from human CDK5RAP3. AA range:341-390
<b>Specificity</b>	HSF-27 Polyclonal Antibody detects endogenous levels of HSF-27 protein.
<b>Formulation</b>	Liquid in PBS containing 50% glycerol, 0.5% BSA and 0.02% sodium azide..
<b>Storage</b>	Store at -20°C. Avoid repeated freeze-thaw cycles.
<b>Protein Name</b>	CDK5 regulatory subunit-associated protein 3
<b>Gene Name</b>	CDK5RAP3
<b>Cellular localization</b>	Nucleus . Cytoplasm . Cytoplasm, cytoskeleton, microtubule organizing center, centrosome . Colocalizes and associates with microtubules. .
<b>Purification</b>	The antibody was affinity-purified from rabbit antiserum by affinity-chromatography using epitope-specific immunogen.
<b>Clonality</b>	Polyclonal

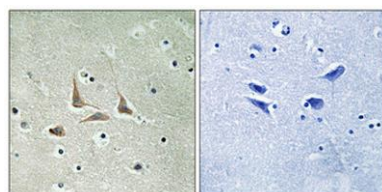
<b>Concentration</b>	1 mg/ml
<b>Observed band</b>	60kD
<b>Human Gene ID</b>	80279
<b>Human Swiss-Prot Number</b>	Q96JB5
<b>Alternative Names</b>	CDK5RAP3; IC53; MSTP016; OK/SW-cl.114; PP1553; CDK5 regulatory subunit-associated protein 3; CDK5 activator-binding protein C53; Protein HSF-27

### Background

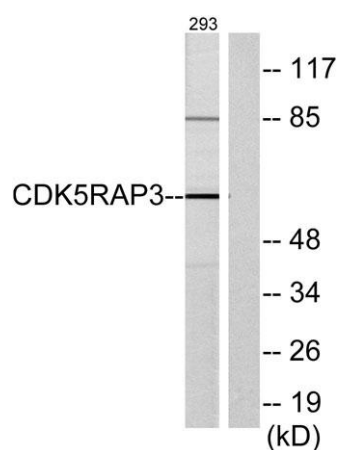
This gene encodes a protein that has been reported to function in signaling pathways governing transcriptional regulation and cell cycle progression. It may play a role in tumorigenesis and metastasis. A pseudogene of this gene is located on the long arm of chromosome 20. Alternative splicing results in multiple transcript variants that encode different isoforms. [provided by RefSeq, May 2013],



**Western Blot analysis of various cells using HSF-27 Polyclonal Antibody diluted at 1:2000**



**Immunohistochemical analysis of paraffin-embedded Human brain. Antibody was diluted at 1:100(4° overnight). High-pressure and temperature Tris-EDTA,pH8.0 was used for antigen retrieval. Negative ctrl (right) obtained from antibody was pre-absorbed by i**



**Western blot analysis of lysates from 293 cells, using CDK5RAP3 Antibody. The lane on the right is blocked with the synthesized peptide.**