

## HLX1 rabbit pAb

**Cat#: orb765413 (Manual)**

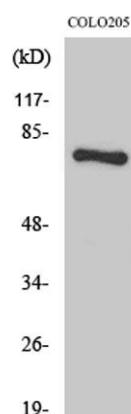
For research use only. Not intended for diagnostic use.

<b>Product Name</b>	HLX1 rabbit pAb
<b>Host species</b>	Rabbit
<b>Applications</b>	WB;IHC;IF;ELISA
<b>Species Cross-Reactivity</b>	Human;Mouse;Rat
<b>Recommended dilutions</b>	Western Blot: 1/500 - 1/2000. Immunohistochemistry: 1/100 - 1/300. Immunofluorescence: 1/200 - 1/1000. ELISA: 1/10000. Not yet tested in other applications.
<b>Immunogen</b>	The antiserum was produced against synthesized peptide derived from human HLX1. AA range:321-370
<b>Specificity</b>	HLX1 Polyclonal Antibody detects endogenous levels of HLX1 protein.
<b>Formulation</b>	Liquid in PBS containing 50% glycerol, 0.5% BSA and 0.02% sodium azide..
<b>Storage</b>	Store at -20°C. Avoid repeated freeze-thaw cycles.
<b>Protein Name</b>	H2.0-like homeobox protein
<b>Gene Name</b>	HLX
<b>Cellular localization</b>	Nucleus .
<b>Purification</b>	The antibody was affinity-purified from rabbit antiserum by affinity-chromatography using epitope-specific immunogen.
<b>Clonality</b>	Polyclonal

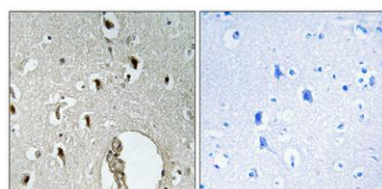
<b>Concentration</b>	1 mg/ml
<b>Observed band</b>	75kD
<b>Human Gene ID</b>	3142
<b>Human Swiss-Prot Number</b>	Q14774
<b>Alternative Names</b>	HLX; HLX1; H2.0-like homeobox protein; Homeobox protein HB24; Homeobox protein HLX1

### Background

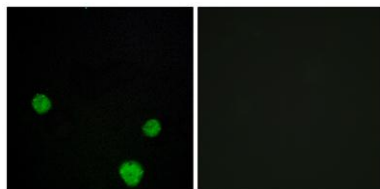
function: Transcription factor required for TBX21/T-bet-dependent maturation of Th1 cells as well as maintenance of Th1-specific gene expression. Involved in embryogenesis and hematopoiesis., sequence caution: Translation N-terminally extended., similarity: Belongs to the H2.0 homeobox family., similarity: Contains 1 homeobox DNA-binding domain., tissue specificity: Low level in normal B and T-cells, high level in activated lymphocytes and monocytes. Also found in thymus, tonsil, bone marrow, developing vessels, and fetal brain.,



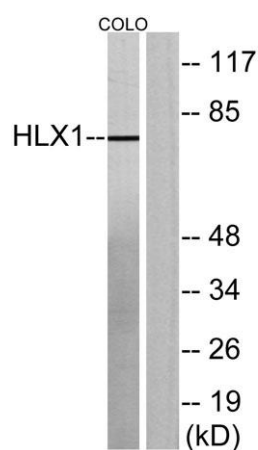
**Western Blot analysis of various cells using HLX1 Polyclonal Antibody diluted at 1:1000**



**Immunohistochemical analysis of paraffin-embedded Human brain. Antibody was diluted at 1:100(4° overnight). High-pressure and temperature Tris-EDTA, pH8.0 was used for antigen retrieval. Negative ctrl (right) obtained from antibody was pre-absorbed by immunogen peptide.**



**Immunofluorescence analysis of MCF7 cells, using HLX1 Antibody. The picture on the right is blocked with the synthesized peptide.**



**Western blot analysis of lysates from COLO205 cells, using HLX1 Antibody. The lane on the right is blocked with the synthesized peptide.**