

HLA-DO α rabbit pAb

Cat#: orb765411 (Manual)

For research use only. Not intended for diagnostic use.

Product Name	HLA-DO α rabbit pAb
Host species	Rabbit
Applications	WB;IHC;IF;ELISA
Species Cross-Reactivity	Human
Recommended dilutions	Western Blot: 1/500 - 1/2000. Immunohistochemistry: 1/100 - 1/300. ELISA: 1/40000. Not yet tested in other applications.
Immunogen	The antiserum was produced against synthesized peptide derived from human HLA-DOA. AA range:71-120
Specificity	HLA-DO α Polyclonal Antibody detects endogenous levels of HLA-DO α protein.
Formulation	Liquid in PBS containing 50% glycerol, 0.5% BSA and 0.02% sodium azide..
Storage	Store at -20°C. Avoid repeated freeze-thaw cycles.
Protein Name	HLA class II histocompatibility antigen DO alpha chain
Gene Name	HLA-DOA
Cellular localization	Endosome membrane; Single-pass type I membrane protein. Lysosome membrane; Single-pass type I membrane protein. Complexes with HLA-DM molecule during intracellular transport and in endosomal/lysosomal compartments. Heterotetramerization is necessary to exit the ER.
Purification	The antibody was affinity-purified from rabbit antiserum by affinity-chromatography using epitope-specific immunogen.

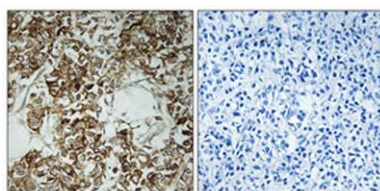
Clonality	Polyclonal
Concentration	1 mg/ml
Observed band	34kD
Human Gene ID	3111
Human Swiss-Prot Number	P06340
Alternative Names	HLA-DOA; HLA-DNA; HLA-DZA; HLA class II histocompatibility antigen; DO alpha chain; MHC DN-alpha; MHC DZ alpha; MHC class II antigen DOA

Background

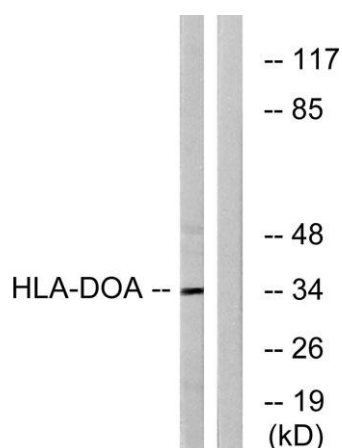
HLA-DOA belongs to the HLA class II alpha chain paralogues. HLA-DOA forms a heterodimer with HLA-DOB. The heterodimer, HLA-DO, is found in lysosomes in B cells and regulates HLA-DM-mediated peptide loading on MHC class II molecules. In comparison with classical HLA class II molecules, this gene exhibits very little sequence variation, especially at the protein level. [provided by RefSeq, Jul 2008],



Western Blot analysis of various cells using HLA-DOα Polyclonal Antibody



Immunohistochemical analysis of paraffin-embedded Human breast cancer. Antibody was diluted at 1:100(4° overnight). High-pressure and temperature Tris-EDTA,pH8.0 was used for antigen retrieval. Negative contrl (right) obtained from antibody was pre-absor



**Western blot analysis of lysates from COLO cells, using HLA-DOA Antibody.
The lane on the right is blocked with the synthesized peptide.**