

HIPK4 rabbit pAb

Cat#: orb765389 (Manual)

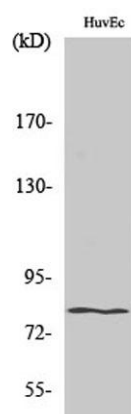
For research use only. Not intended for diagnostic use.

Product Name	HIPK4 rabbit pAb
Host species	Rabbit
Applications	WB;IHC;IF;ELISA
Species Cross-Reactivity	Human;Mouse;Rat
Recommended dilutions	Western Blot: 1/500 - 1/2000. Immunohistochemistry: 1/100 - 1/300. Immunofluorescence: 1/200 - 1/1000. ELISA: 1/20000. Not yet tested in other applications.
Immunogen	The antiserum was produced against synthesized peptide derived from human HIPK4. AA range:511-560
Specificity	HIPK4 Polyclonal Antibody detects endogenous levels of HIPK4 protein.
Formulation	Liquid in PBS containing 50% glycerol, 0.5% BSA and 0.02% sodium azide..
Storage	Store at -20°C. Avoid repeated freeze-thaw cycles.
Protein Name	Homeodomain-interacting protein kinase 4
Gene Name	HIPK4
Cellular localization	Cytoplasm .
Purification	The antibody was affinity-purified from rabbit antiserum by affinity-chromatography using epitope-specific immunogen.
Clonality	Polyclonal

Concentration	1 mg/ml
Observed band	70kD
Human Gene ID	147746
Human Swiss-Prot Number	Q8NE63
Alternative Names	HIPK4; Homeodomain-interacting protein kinase 4

Background

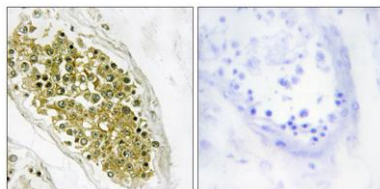
homeodomain interacting protein kinase 4(HIPK4) Homo sapiens This gene encodes a member of the homeodomain interacting protein kinase (HIPK) family of proteins. While other members of this family are found throughout vertebrates, this member is present only in mammals. Compared to other members of this family, the encoded protein lacks a nuclear localization signal and a C-terminal autoinhibitory domain. The encoded protein exhibits kinase activity and may phosphorylate the tumor suppressor protein p53. [provided by RefSeq, Jul 2016],



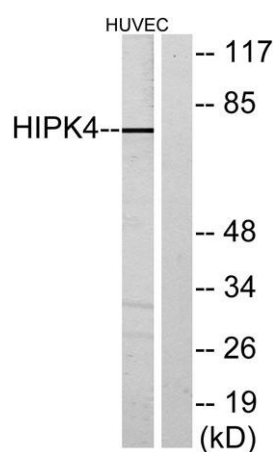
Western Blot analysis of various cells using HIPK4 Polyclonal Antibody



Immunofluorescence analysis of A549 cells, using HIPK4 Antibody. The picture on the right is blocked with the synthesized peptide.



Immunohistochemistry analysis of paraffin-embedded human testis tissue, using HIPK4 Antibody. The picture on the right is blocked with the synthesized peptide.



Western blot analysis of lysates from HUVEC cells, using HIPK4 Antibody. The lane on the right is blocked with the synthesized peptide.