

Gα olf rabbit pAb

Cat#: orb765366 (Manual)

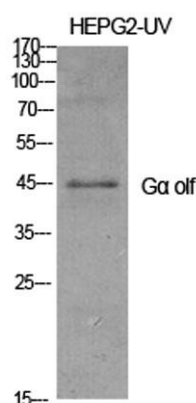
For research use only. Not intended for diagnostic use.

| | |
|---------------------------------|--|
| Product Name | Gα olf rabbit pAb |
| Host species | Rabbit |
| Applications | WB;IHC;IF;ELISA |
| Species Cross-Reactivity | Human;Mouse;Rat |
| Recommended dilutions | Western Blot: 1/500 - 1/2000. Immunohistochemistry: 1/100 - 1/300. ELISA: 1/20000. Not yet tested in other applications. |
| Immunogen | The antiserum was produced against synthesized peptide derived from human GNAL. AA range:41-90 |
| Specificity | Gα olf Polyclonal Antibody detects endogenous levels of Gα olf protein. |
| Formulation | Liquid in PBS containing 50% glycerol, 0.5% BSA and 0.02% sodium azide.. |
| Storage | Store at -20°C. Avoid repeated freeze-thaw cycles. |
| Protein Name | Guanine nucleotide-binding protein G(olf) subunit alpha |
| Gene Name | GNAL |
| Cellular localization | plasma membrane,extracellular exosome, |
| Purification | The antibody was affinity-purified from rabbit antiserum by affinity-chromatography using epitope-specific immunogen. |
| Clonality | Polyclonal |

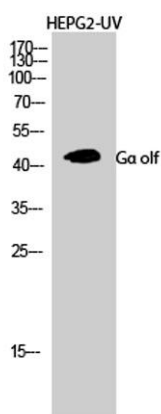
| | |
|--------------------------------|--|
| Concentration | 1 mg/ml |
| Observed band | 40kD |
| Human Gene ID | 2774 |
| Human Swiss-Prot Number | P38405 |
| Alternative Names | GNAL; Guanine nucleotide-binding protein G(olf) subunit alpha; Adenylate cyclase-stimulating G alpha protein; olfactory type |

Background

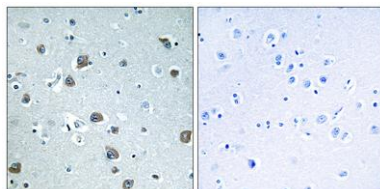
G protein subunit alpha L(GNAL) Homo sapiens This gene encodes a stimulatory G protein alpha subunit which mediates odorant signaling in the olfactory epithelium. This protein couples dopamine type 1 receptors and adenosine A2A receptors and is widely expressed in the central nervous system. Mutations in this gene have been associated with dystonia 25 and this gene is located in a susceptibility region for bipolar disorder and schizophrenia. Alternative splicing results in multiple transcript variants. [provided by RefSeq, Dec 2013],



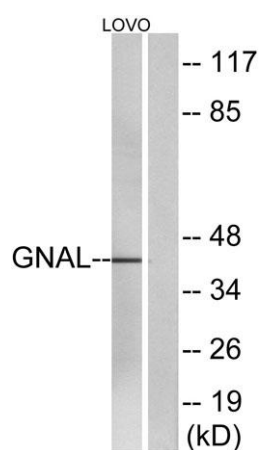
Western Blot analysis of various cells using Ga olf Polyclonal Antibody diluted at 1:1000



Western Blot analysis of HEPG2-UV cells using Ga olf Polyclonal Antibody diluted at 1:1000



Immunohistochemistry analysis of paraffin-embedded human brain tissue, using GNAL Antibody. The picture on the right is blocked with the synthesized peptide.



Western blot analysis of lysates from LOVO cells, using GNAL Antibody. The lane on the right is blocked with the synthesized peptide.