

GRIN2 rabbit pAb

Cat#: orb765350 (Manual)

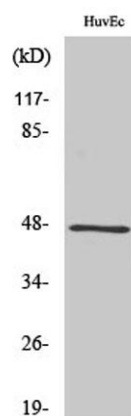
For research use only. Not intended for diagnostic use.

Product Name	GRIN2 rabbit pAb
Host species	Rabbit
Applications	WB;IHC;IF;ELISA
Species Cross-Reactivity	Human;Rat;Mouse;
Recommended dilutions	Western Blot: 1/500 - 1/2000. Immunohistochemistry: 1/100 - 1/300. ELISA: 1/40000. Not yet tested in other applications.
Immunogen	The antiserum was produced against synthesized peptide derived from human GPRIN2. AA range:11-60
Specificity	GRIN2 Polyclonal Antibody detects endogenous levels of GRIN2 protein.
Formulation	Liquid in PBS containing 50% glycerol, 0.5% BSA and 0.02% sodium azide..
Storage	Store at -20°C. Avoid repeated freeze-thaw cycles.
Protein Name	G protein-regulated inducer of neurite outgrowth 2
Gene Name	GPRIN2
Cellular localization	
Purification	The antibody was affinity-purified from rabbit antiserum by affinity-chromatography using epitope-specific immunogen.
Clonality	Polyclonal

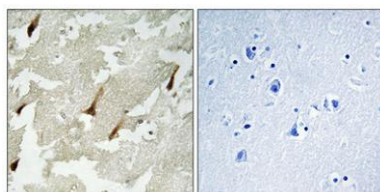
Concentration	1 mg/ml
Observed band	47kD
Human Gene ID	9721
Human Swiss-Prot Number	O60269
Alternative Names	GPRIN2; KIAA0514; G protein-regulated inducer of neurite outgrowth 2; GRIN2

Background

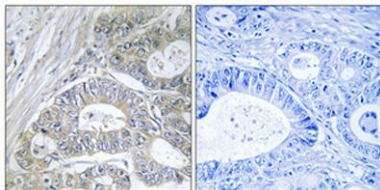
function:May be involved in neurite outgrowth.,subunit:Interacts with activated forms of GNAO1 and GNAZ.,tissue specificity:Expressed specifically in the cerebellum.,



Western Blot analysis of various cells using GRIN2 Polyclonal Antibody



Immunohistochemical analysis of paraffin-embedded Human brain. Antibody was diluted at 1:100(4° overnight). High-pressure and temperature Tris-EDTA,pH8.0 was used for antigen retrieval. Negative contrl (right) obtained from antibody was pre-absorbed by i



Immunohistochemical analysis of paraffin-embedded Human colon cancer. Antibody was diluted at 1:100(4° overnight). High-pressure and temperature Tris-EDTA,pH8.0 was used for antigen retrieval. Negative contrl (right) obtained from antibody was pre-absorb