

GRASP55 rabbit pAb**Cat#: orb765346 (Manual)**

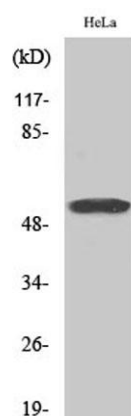
For research use only. Not intended for diagnostic use.

Product Name	GRASP55 rabbit pAb
Host species	Rabbit
Applications	WB;IHC;IF;ELISA
Species Cross-Reactivity	Human;Mouse;Rat
Recommended dilutions	Western Blot: 1/500 - 1/2000. Immunohistochemistry: 1/100 - 1/300. ELISA: 1/40000. Not yet tested in other applications.
Immunogen	The antiserum was produced against synthesized peptide derived from human GORASP2. AA range:181-230
Specificity	GRASP55 Polyclonal Antibody detects endogenous levels of GRASP55 protein.
Formulation	Liquid in PBS containing 50% glycerol, 0.5% BSA and 0.02% sodium azide..
Storage	Store at -20°C. Avoid repeated freeze-thaw cycles.
Protein Name	Golgi reassembly-stacking protein 2
Gene Name	GORASP2
Cellular localization	Golgi apparatus membrane ; Lipid-anchor . Endoplasmic reticulum membrane . Golgi apparatus . Detected in the intermediate Golgi, membrane-associated (By similarity). ER stress triggers its relocalization from Golgi to ER membrane (PubMed:27062250, PubMed:28067262). .
Purification	The antibody was affinity-purified from rabbit antiserum by affinity-chromatography using epitope-specific immunogen.

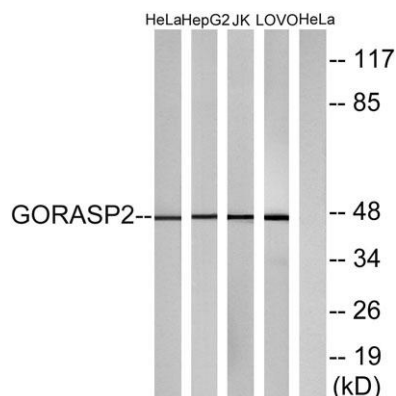
Clonality	Polyclonal
Concentration	1 mg/ml
Observed band	47kD
Human Gene ID	26003
Human Swiss-Prot Number	Q9H8Y8
Alternative Names	GORASP2; GOLPH6; Golgi reassembly-stacking protein 2; GRS2; Golgi phosphoprotein 6; GOLPH6; Golgi reassembly-stacking protein of 55 kDa; GRASP55; p59

Background

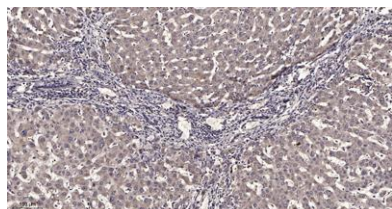
This gene encodes a member of the Golgi reassembly stacking protein family. These proteins may play a role in the stacking of Golgi cisternae and Golgi ribbon formation, as well as Golgi fragmentation during apoptosis or mitosis. The encoded protein also plays a role in the intracellular transport of transforming growth factor alpha and may function as a molecular chaperone. A pseudogene of this gene is located on the short arm of chromosome 2. Alternatively spliced transcript variants encoding multiple isoforms have been observed for this gene. [provided by RefSeq, Jan 2011],



Western Blot analysis of various cells using GRASP55 Polyclonal Antibody



Western blot analysis of lysates from HeLa, HepG2, Jurkat, and LOVO cells, using GORASP2 Antibody. The lane on the right is blocked with the synthesized peptide.



Immunohistochemical analysis of paraffin-embedded human liver cancer. 1, Antibody was diluted at 1:200(4° overnight). 2, Tris-EDTA,pH9.0 was used for antigen retrieval. 3,Secondary antibody was diluted at 1:200(room temperature, 45min).