

GPR82 rabbit pAb

Cat#: orb765342 (Manual)

For research use only. Not intended for diagnostic use.

Product Name	GPR82 rabbit pAb
Host species	Rabbit
Applications	WB;ELISA
Species Cross-Reactivity	Human;Mouse
Recommended dilutions	Western Blot: 1/500 - 1/2000. ELISA: 1/10000. Not yet tested in other applications.
Immunogen	The antiserum was produced against synthesized peptide derived from human GPR82. AA range:121-170
Specificity	GPR82 Polyclonal Antibody detects endogenous levels of GPR82 protein.
Formulation	Liquid in PBS containing 50% glycerol, 0.5% BSA and 0.02% sodium azide..
Storage	Store at -20°C. Avoid repeated freeze-thaw cycles.
Protein Name	Probable G-protein coupled receptor 82
Gene Name	GPR82
Cellular localization	Cell membrane; Multi-pass membrane protein.
Purification	The antibody was affinity-purified from rabbit antiserum by affinity-chromatography using epitope-specific immunogen.
Clonality	Polyclonal

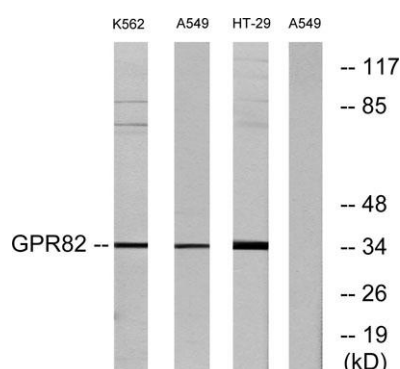
Concentration	1 mg/ml
Observed band	35kD
Human Gene ID	27197
Human Swiss-Prot Number	Q96P67
Alternative Names	GPR82; Probable G-protein coupled receptor 82

Background

The protein encoded by this gene is an orphan G protein-coupled receptor of unknown function. The encoded protein is a member of a family of proteins that contain seven transmembrane domains and transduce extracellular signals through heterotrimeric G proteins. [provided by RefSeq, Sep 2011],



Western Blot analysis of various cells using GPR82 Polyclonal Antibody



Western blot analysis of lysates from A549, K562, and HT-29 cells, using GPR82 Antibody. The lane on the right is blocked with the synthesized peptide.