

GPR19 rabbit pAb

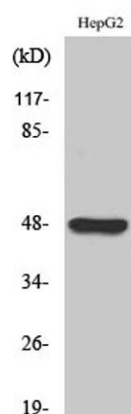
Cat#: orb765336 (Manual)

For research use only. Not intended for diagnostic use.

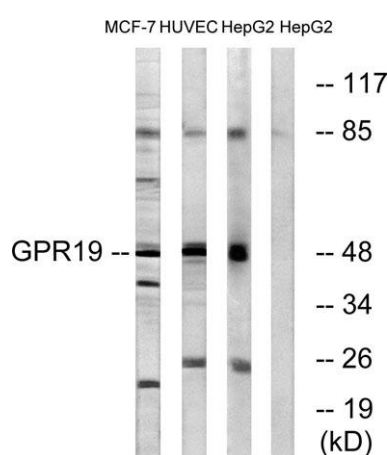
Product Name	GPR19 rabbit pAb
Host species	Rabbit
Applications	WB;IHC;IF;ELISA
Species Cross-Reactivity	Human;Mouse;Rat
Recommended dilutions	Western Blot: 1/500 - 1/2000. Immunohistochemistry: 1/100 - 1/300. Immunofluorescence: 1/200 - 1/1000. ELISA: 1/5000. Not yet tested in other applications.
Immunogen	The antiserum was produced against synthesized peptide derived from human GPR19. AA range:361-410
Specificity	GPR19 Polyclonal Antibody detects endogenous levels of GPR19 protein.
Formulation	Liquid in PBS containing 50% glycerol, 0.5% BSA and 0.02% sodium azide..
Storage	Store at -20°C. Avoid repeated freeze-thaw cycles.
Protein Name	Probable G-protein coupled receptor 19
Gene Name	GPR19
Cellular localization	Cell membrane; Multi-pass membrane protein.
Purification	The antibody was affinity-purified from rabbit antiserum by affinity-chromatography using epitope-specific immunogen.
Clonality	Polyclonal

Concentration	1 mg/ml
Observed band	47kD
Human Gene ID	2842
Human Swiss-Prot Number	Q15760
Alternative Names	GPR19; Probable G-protein coupled receptor 19; GPR-NGA

Background function:Orphan receptor.,similarity:Belongs to the G-protein coupled receptor 1 family.,tissue specificity:Abundant expression in the brain.,



Western Blot analysis of various cells using GPR19 Polyclonal Antibody cells nucleus extracted by Minute TM Cytoplasmic and Nuclear Fractionation kit (SC-003, Invent biotech, MN, USA).



Western blot analysis of lysates from MCF-7, HUVEC, and HepG2 cells, using GPR19 Antibody. The lane on the right is blocked with the synthesized peptide.