

GPR175 rabbit pAb

Cat#: orb765333 (Manual)

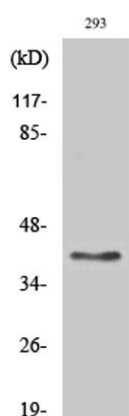
For research use only. Not intended for diagnostic use.

Product Name	GPR175 rabbit pAb
Host species	Rabbit
Applications	WB;IF;ELISA
Species Cross-Reactivity	Human;Mouse;Rat
Recommended dilutions	Western Blot: 1/500 - 1/2000. Immunofluorescence: 1/200 - 1/1000. ELISA: 1/20000. Not yet tested in other applications.
Immunogen	The antiserum was produced against synthesized peptide derived from human GPR175. AA range:198-247
Specificity	GPR175 Polyclonal Antibody detects endogenous levels of GPR175 protein.
Formulation	Liquid in PBS containing 50% glycerol, 0.5% BSA and 0.02% sodium azide..
Storage	Store at -20°C. Avoid repeated freeze-thaw cycles.
Protein Name	Transmembrane protein adipocyte-associated 1
Gene Name	TPRA1
Cellular localization	Membrane; Multi-pass membrane protein.
Purification	The antibody was affinity-purified from rabbit antiserum by affinity-chromatography using epitope-specific immunogen.
Clonality	Polyclonal

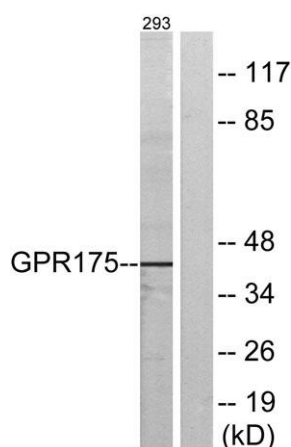
Concentration	1 mg/ml
Observed band	41kD
Human Gene ID	131601
Human Swiss-Prot Number	Q86W33
Alternative Names	TPRA1; GPR175; PP6566; Transmembrane protein adipocyte-associated 1; Integral membrane protein GPR175

Background

TPRA1 is a gene on chromosome 3q21.3 that encodes transmembrane protein adipocyte-associated 1 expressed in most tissues, especially in heart, placenta and kidney, and plays role in lipid metabolism and in ageing. Gene Ontology (GO) annotations related to this gene include G-protein coupled receptor activity.



Western Blot analysis of various cells using GPR175 Polyclonal Antibody diluted at 1:2000



Western blot analysis of lysates from 293 cells, using GPR175 Antibody. The lane on the right is blocked with the synthesized peptide.