

GPR156 rabbit pAb

Cat#: orb765331 (Manual)

For research use only. Not intended for diagnostic use.

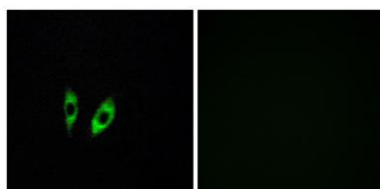
Product Name	GPR156 rabbit pAb
Host species	Rabbit
Applications	WB;IF;ELISA
Species Cross-Reactivity	Human;Rat;Mouse;
Recommended dilutions	Western Blot: 1/500 - 1/2000. Immunofluorescence: 1/200 - 1/1000. ELISA: 1/5000. Not yet tested in other applications.
Immunogen	The antiserum was produced against synthesized peptide derived from human GPR156. AA range:501-550
Specificity	GPR156 Polyclonal Antibody detects endogenous levels of GPR156 protein.
Formulation	Liquid in PBS containing 50% glycerol, 0.5% BSA and 0.02% sodium azide..
Storage	Store at -20°C. Avoid repeated freeze-thaw cycles.
Protein Name	Probable G-protein coupled receptor 156
Gene Name	GPR156
Cellular localization	Cell membrane; Multi-pass membrane protein.
Purification	The antibody was affinity-purified from rabbit antiserum by affinity-chromatography using epitope-specific immunogen.
Clonality	Polyclonal

Concentration	1 mg/ml
Observed band	89kD
Human Gene ID	165829
Human Swiss-Prot Number	Q8NFN8
Alternative Names	GPR156; GABABL; PGR28; Probable G-protein coupled receptor 156; G-protein coupled receptor PGR28; GABAB-related G-protein coupled receptor

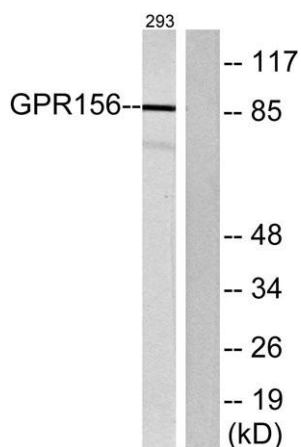
Background G protein-coupled receptors (GPCRs) are a large superfamily of cell surface receptors characterized by 7 helical transmembrane domains, together with N-terminal extracellular and C-terminal intracellular domains.[supplied by OMIM, Mar 2008],



Western Blot analysis of various cells using GPR156 Polyclonal Antibody



Immunofluorescence analysis of HeLa cells, using GPR156 Antibody. The picture on the right is blocked with the synthesized peptide.



Western blot analysis of lysates from 293 cells, using GPR156 Antibody. The lane on the right is blocked with the synthesized peptide.