

## GPR126 rabbit pAb

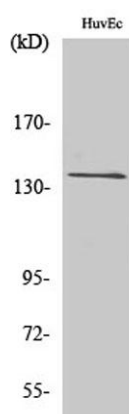
**Cat#: orb765327 (Manual)**

For research use only. Not intended for diagnostic use.

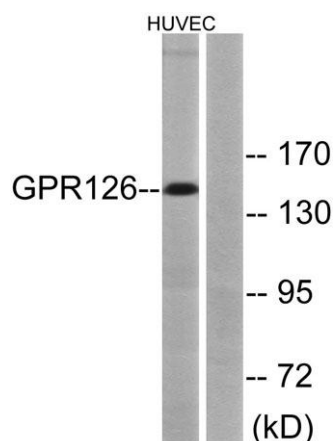
|                                 |   |
|---------------------------------|---|
| <b>Product Name</b>             | GPR126 rabbit pAb   |
| <b>Host species</b>             | Rabbit  |
| <b>Applications</b>             | WB;IHC;IF;ELISA   |
| <b>Species Cross-Reactivity</b> | Human;Rat;Mouse;  |
| <b>Recommended dilutions</b>    | Western Blot: 1/500 - 1/2000. Immunohistochemistry: 1/100 - 1/300. Immunofluorescence: 1/200 - 1/1000. ELISA: 1/5000. Not yet tested in other applications. |
| <b>Immunogen</b>                | The antiserum was produced against synthesized peptide derived from human GPR126. AA range:431-480  |
| <b>Specificity</b>              | GPR126 Polyclonal Antibody detects endogenous levels of GPR126 protein.   |
| <b>Formulation</b>              | Liquid in PBS containing 50% glycerol, 0.5% BSA and 0.02% sodium azide..  |
| <b>Storage</b>                  | Store at -20°C. Avoid repeated freeze-thaw cycles.  |
| <b>Protein Name</b>             | G-protein coupled receptor 126  |
| <b>Gene Name</b>                | GPR126  |
| <b>Cellular localization</b>    | Cell membrane ; Multi-pass membrane protein . Detected on the cell surface of activated but not resting umbilical vein. .                                   |
| <b>Purification</b>             | The antibody was affinity-purified from rabbit antiserum by affinity-chromatography using epitope-specific immunogen.                                       |
| <b>Clonality</b>                | Polyclonal  |

|                                |   |
|--------------------------------|---|
| <b>Concentration</b>           | 1 mg/ml   |
| <b>Observed band</b>           | 145kD   |
| <b>Human Gene ID</b>           | 57211   |
| <b>Human Swiss-Prot Number</b> | Q86SQ4  |
| <b>Alternative Names</b>       | GPR126; DREG; VIGR; G-protein coupled receptor 126; Developmentally regulated G-protein-coupled receptor; Vascular inducible G protein-coupled receptor |

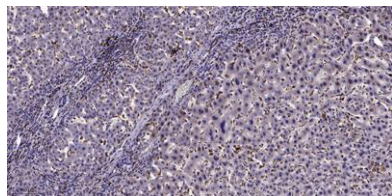
**Background** This gene, which is upregulated in human umbilical vein endothelial cells, encodes a G protein-coupled receptor. Variations in this gene can affect a person's stature. Multiple transcript variants encoding different proteins have been found for this gene. [provided by RefSeq, Mar 2009],



**Western Blot analysis of various cells using GPR126 Polyclonal Antibody diluted at 1:500**



**Western blot analysis of lysates from HUVEC cells, using GPR126 Antibody. The lane on the right is blocked with the synthesized peptide.**



**Immunohistochemical analysis of paraffin-embedded human liver cancer. 1, Antibody was diluted at 1:200(4° overnight). 2, Tris-EDTA,pH9.0 was used for antigen retrieval. 3,Secondary antibody was diluted at 1:200(room temperature, 45min).**