

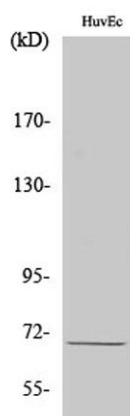
GPR107 rabbit pAb

Cat#: orb765321 (Manual)

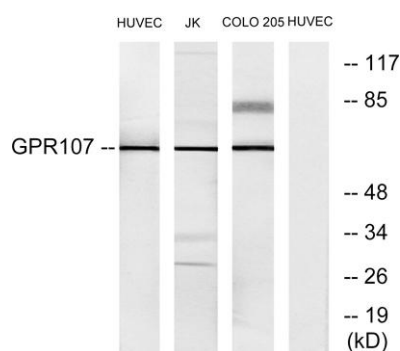
For research use only. Not intended for diagnostic use.

Product Name	GPR107 rabbit pAb
Host species	Rabbit
Applications	WB;IHC;IF;ELISA
Species Cross-Reactivity	Human;Rat;Mouse;
Recommended dilutions	Western Blot: 1/500 - 1/2000. Immunohistochemistry: 1/100 - 1/300. Immunofluorescence: 1/200 - 1/1000. ELISA: 1/5000. Not yet tested in other applications.
Immunogen	The antiserum was produced against synthesized peptide derived from human GPR107. AA range:141-190
Specificity	GPR107 Polyclonal Antibody detects endogenous levels of GPR107 protein.
Formulation	Liquid in PBS containing 50% glycerol, 0.5% BSA and 0.02% sodium azide..
Storage	Store at -20°C. Avoid repeated freeze-thaw cycles.
Protein Name	Protein GPR107
Gene Name	GPR107
Cellular localization	Cell membrane ; Multi-pass membrane protein . Golgi apparatus, trans-Golgi network membrane .
Purification	The antibody was affinity-purified from rabbit antiserum by affinity-chromatography using epitope-specific immunogen.
Clonality	Polyclonal

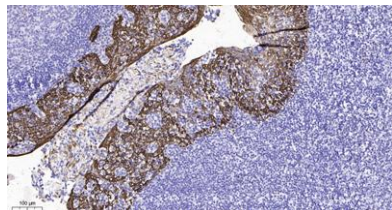
Concentration	1 mg/ml
Observed band	67kD
Human Gene ID	57720
Human Swiss-Prot Number	Q5VW38
Alternative Names	GPR107; KIAA1624; LUSTR1; Protein GPR107; Lung seven transmembrane receptor 1
Background	similarity:Belongs to the LU7TM family.,



Western Blot analysis of various cells using GPR107 Polyclonal Antibody



Western blot analysis of lysates from HUVEC, Jurkat, and COLO205 cells, using GPR107 Antibody. The lane on the right is blocked with the synthesized peptide.



Immunohistochemical analysis of paraffin-embedded human tonsil. 1, Antibody was diluted at 1:200(4° overnight). 2, Tris-EDTA,pH9.0 was used for antigen retrieval. 3,Secondary antibody was diluted at 1:200(room temperature, 45min).