

## GLK rabbit pAb

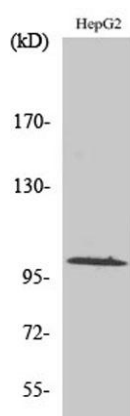
**Cat#: orb765306 (Manual)**

For research use only. Not intended for diagnostic use.

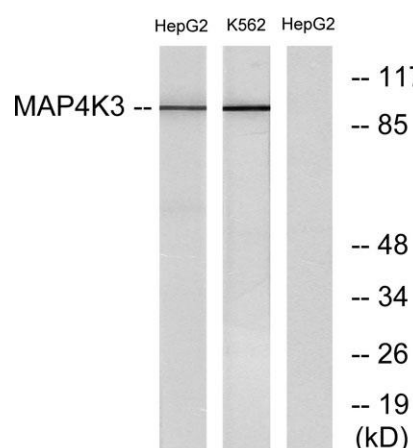
<b>Product Name</b>	GLK rabbit pAb
<b>Host species</b>	Rabbit
<b>Applications</b>	WB;ELISA
<b>Species Cross-Reactivity</b>	Human;Mouse;Rat
<b>Recommended dilutions</b>	Western Blot: 1/500 - 1/2000. ELISA: 1/20000. Not yet tested in other applications.
<b>Immunogen</b>	The antiserum was produced against synthesized peptide derived from human MAP4K3. AA range:10-59
<b>Specificity</b>	GLK Polyclonal Antibody detects endogenous levels of GLK protein.
<b>Formulation</b>	Liquid in PBS containing 50% glycerol, 0.5% BSA and 0.02% sodium azide..
<b>Storage</b>	Store at -20°C. Avoid repeated freeze-thaw cycles.
<b>Protein Name</b>	Mitogen-activated protein kinase kinase kinase kinase 3
<b>Gene Name</b>	MAP4K3
<b>Cellular localization</b>	intracellular,cytoplasm,
<b>Purification</b>	The antibody was affinity-purified from rabbit antiserum by affinity-chromatography using epitope-specific immunogen.
<b>Clonality</b>	Polyclonal

<b>Concentration</b>	1 mg/ml
<b>Observed band</b>	101kD
<b>Human Gene ID</b>	8491
<b>Human Swiss-Prot Number</b>	Q8IVH8
<b>Alternative Names</b>	MAP4K3; RAB8IPL1; Mitogen-activated protein kinase kinase kinase 3; Germinal center kinase-related protein kinase; GLK; MAPK/ERK kinase kinase kinase 3; MEK kinase kinase 3; MEKKK 3

**Background** mitogen-activated protein kinase kinase kinase 3(MAP4K3) Homo sapiens This gene encodes a member of the mitogen-activated protein kinase kinase kinase kinase family. The encoded protein activates key effectors in cell signalling, among them c-Jun. Alternatively spliced transcripts encoding multiple isoforms have been observed for this gene. [provided by RefSeq, Jul 2012],



**Western Blot analysis of various cells using GLK Polyclonal Antibody**



**Western blot analysis of lysates from HepG2 and K562 cells, using MAP4K3 Antibody. The lane on the right is blocked with the synthesized peptide.**