

GIMAP2 rabbit pAb

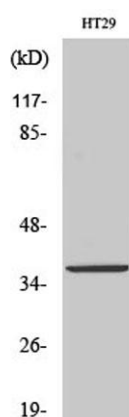
Cat#: orb765297 (Manual)

For research use only. Not intended for diagnostic use.

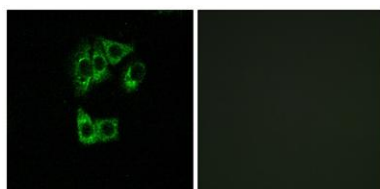
Product Name	GIMAP2 rabbit pAb
Host species	Rabbit
Applications	WB;IF;ELISA
Species Cross-Reactivity	Human;Rat;Mouse;
Recommended dilutions	Western Blot: 1/500 - 1/2000. Immunofluorescence: 1/200 - 1/1000. ELISA: 1/20000. Not yet tested in other applications.
Immunogen	The antiserum was produced against synthesized peptide derived from human GIMAP2. AA range:201-250
Specificity	GIMAP2 Polyclonal Antibody detects endogenous levels of GIMAP2 protein.
Formulation	Liquid in PBS containing 50% glycerol, 0.5% BSA and 0.02% sodium azide..
Storage	Store at -20°C. Avoid repeated freeze-thaw cycles.
Protein Name	GTPase IMAP family member 2
Gene Name	GIMAP2
Cellular localization	Lipid droplet .
Purification	The antibody was affinity-purified from rabbit antiserum by affinity-chromatography using epitope-specific immunogen.
Clonality	Polyclonal

Concentration	1 mg/ml
Observed band	38kD
Human Gene ID	26157
Human Swiss-Prot Number	Q9UG22
Alternative Names	GIMAP2; IMAP2; GTPase IMAP family member 2; Immunity-associated protein 2; hIMAP2

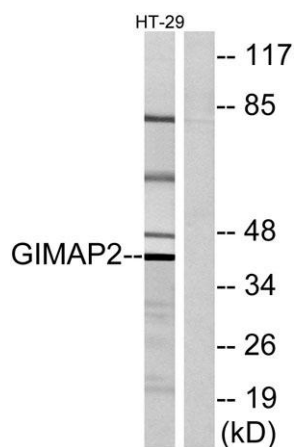
Background This gene encodes a protein belonging to the GTP-binding superfamily and to the immuno-associated nucleotide (IAN) subfamily of nucleotide-binding proteins. In humans, the IAN subfamily genes are located in a cluster at 7q36.1. [provided by RefSeq, Jul 2008],



Western Blot analysis of various cells using GIMAP2 Polyclonal Antibody



Immunofluorescence analysis of A549 cells, using GIMAP2 Antibody. The picture on the right is blocked with the synthesized peptide.



Western blot analysis of lysates from HT-29 cells, using GIMAP2 Antibody. The lane on the right is blocked with the synthesized peptide.