

**GCS- $\beta$ -1 rabbit pAb****Cat#: orb765292 (Manual)**

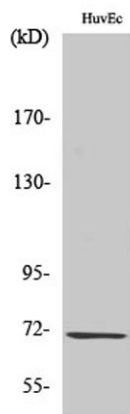
For research use only. Not intended for diagnostic use.

<b>Product Name</b>	GCS- $\beta$ -1 rabbit pAb
<b>Host species</b>	Rabbit
<b>Applications</b>	WB;IHC;IF;ELISA
<b>Species Cross-Reactivity</b>	Human;Mouse;Rat
<b>Recommended dilutions</b>	Western Blot: 1/500 - 1/2000. Immunohistochemistry: 1/100 - 1/300. ELISA: 1/5000. Not yet tested in other applications.
<b>Immunogen</b>	The antiserum was produced against synthesized peptide derived from human Guanylate Cyclase beta. AA range:10-59
<b>Specificity</b>	GCS- $\beta$ -1 Polyclonal Antibody detects endogenous levels of GCS- $\beta$ -1 protein.
<b>Formulation</b>	Liquid in PBS containing 50% glycerol, 0.5% BSA and 0.02% sodium azide..
<b>Storage</b>	Store at -20°C. Avoid repeated freeze-thaw cycles.
<b>Protein Name</b>	Guanylate cyclase soluble subunit beta-1
<b>Gene Name</b>	GUCY1B3
<b>Cellular localization</b>	Cytoplasm .
<b>Purification</b>	The antibody was affinity-purified from rabbit antiserum by affinity-chromatography using epitope-specific immunogen.
<b>Clonality</b>	Polyclonal

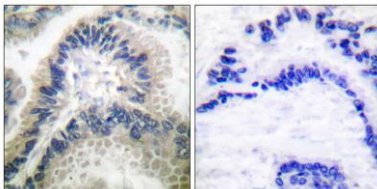
<b>Concentration</b>	1 mg/ml
<b>Observed band</b>	70kD
<b>Human Gene ID</b>	2983
<b>Human Swiss-Prot Number</b>	Q02153
<b>Alternative Names</b>	GUCY1B3; GUC1B3; GUCSB3; GUCY1B1; Guanylate cyclase soluble subunit beta-1; GCS-beta-1; Guanylate cyclase soluble subunit beta-3; GCS-beta-3; Soluble guanylate cyclase small subunit

**Background**

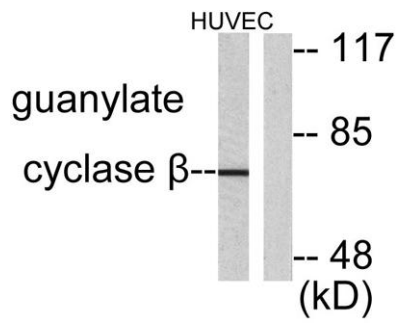
This gene encodes the beta subunit of the soluble guanylate cyclase (sGC), which catalyzes the conversion of GTP (guanosine triphosphate) to cGMP (cyclic guanosine monophosphate). The encoded protein contains an HNOX domain, which serves as a receptor for ligands such as nitric oxide, oxygen and nitrovasodilator drugs. Alternative splicing results in multiple transcript variants. [provided by RefSeq, May 2014],



**Western Blot analysis of various cells using GCS- $\beta$ -1 Polyclonal Antibody**



**Immunohistochemistry analysis of paraffin-embedded human lung carcinoma tissue, using Guanylate Cyclase beta Antibody. The picture on the right is blocked with the synthesized peptide.**



Western blot analysis of lysates from HUVEC cells, using Guanylate Cyclase beta Antibody. The lane on the right is blocked with the synthesized peptide.