

## GCP4 rabbit pAb

**Cat#: orb765286 (Manual)**

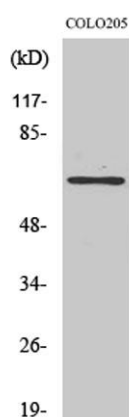
For research use only. Not intended for diagnostic use.

<b>Product Name</b>	GCP4 rabbit pAb
<b>Host species</b>	Rabbit
<b>Applications</b>	WB;IHC;IF;ELISA
<b>Species Cross-Reactivity</b>	Human;Mouse
<b>Recommended dilutions</b>	Western Blot: 1/500 - 1/2000. Immunohistochemistry: 1/100 - 1/300. ELISA: 1/10000. Not yet tested in other applications.
<b>Immunogen</b>	The antiserum was produced against synthesized peptide derived from human TUBGCP4. AA range:191-240
<b>Specificity</b>	GCP4 Polyclonal Antibody detects endogenous levels of GCP4 protein.
<b>Formulation</b>	Liquid in PBS containing 50% glycerol, 0.5% BSA and 0.02% sodium azide..
<b>Storage</b>	Store at -20°C. Avoid repeated freeze-thaw cycles.
<b>Protein Name</b>	Gamma-tubulin complex component 4
<b>Gene Name</b>	TUBGCP4
<b>Cellular localization</b>	Cytoplasm, cytoskeleton, microtubule organizing center, centrosome.
<b>Purification</b>	The antibody was affinity-purified from rabbit antiserum by affinity-chromatography using epitope-specific immunogen.
<b>Clonality</b>	Polyclonal

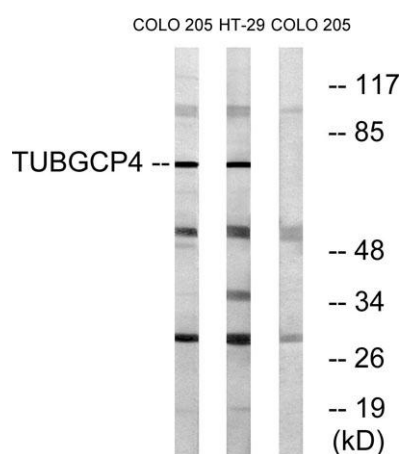
<b>Concentration</b>	1 mg/ml
<b>Observed band</b>	76kD
<b>Human Gene ID</b>	27229
<b>Human Swiss-Prot Number</b>	Q9UGJ1
<b>Alternative Names</b>	TUBGCP4; 76P; GCP4; Gamma-tubulin complex component 4; GCP-4; hGCP4; Gamma-ring complex protein 76 kDa; h76p; hGrip76

### Background

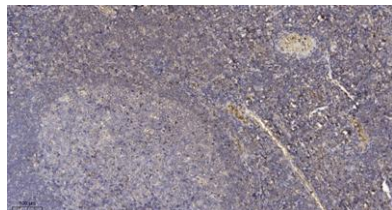
This gene encodes a component of the gamma-tubulin ring complex, which is required for microtubule nucleation. In mammalian cells, the protein localizes to centrosomes in association with gamma-tubulin. Crystal structure analysis revealed a structure composed of five helical bundles arranged around conserved hydrophobic cores. An exposed surface area located in the C-terminal domain is essential and sufficient for direct binding to gamma-tubulin. Mutations in this gene that alter microtubule organization are associated with microcephaly and chorioretinopathy. Alternative splicing results in multiple transcript variants. [provided by RefSeq, May 2015],



Western Blot analysis of various cells using GCP4 Polyclonal Antibody



Western blot analysis of lysates from COLO and HT-29 cells, using TUBGCP4 Antibody. The lane on the right is blocked with the synthesized peptide.



**Immunohistochemical analysis of paraffin-embedded human tonsil. 1, Antibody was diluted at 1:200(4° overnight). 2, Tris-EDTA,pH9.0 was used for antigen retrieval. 3,Secondary antibody was diluted at 1:200(room temperature, 30min).**