

**GBP3 rabbit pAb****Cat#: orb765281 (Manual)**

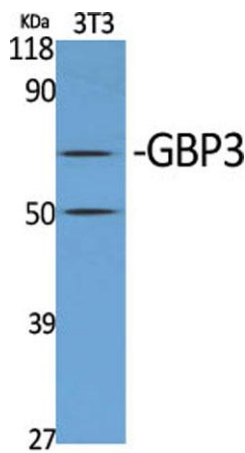
For research use only. Not intended for diagnostic use.

<b>Product Name</b>	GBP3 rabbit pAb
<b>Host species</b>	Rabbit
<b>Applications</b>	WB;IHC;IF;ELISA
<b>Species Cross-Reactivity</b>	Human;Rat;Mouse;
<b>Recommended dilutions</b>	Western Blot: 1/500 - 1/2000. Immunohistochemistry: 1/100 - 1/300. ELISA: 1/10000. Not yet tested in other applications.
<b>Immunogen</b>	The antiserum was produced against synthesized peptide derived from human GBP3. AA range:481-530
<b>Specificity</b>	GBP3 Polyclonal Antibody detects endogenous levels of GBP3 protein.
<b>Formulation</b>	Liquid in PBS containing 50% glycerol, 0.5% BSA and 0.02% sodium azide..
<b>Storage</b>	Store at -20°C. Avoid repeated freeze-thaw cycles.
<b>Protein Name</b>	Guanylate-binding protein 3
<b>Gene Name</b>	GBP3
<b>Cellular localization</b>	Cytoplasm . Cytoplasm, perinuclear region . Golgi apparatus membrane . Heterodimers with GBP1, GBP2 and GBP5 localize in the compartment of the prenylated GBPs: with GBP1 in a vesicle-like compartment, with GBP2, around the nucleus and with GBP-5, at the Golgi apparatus. .
<b>Purification</b>	The antibody was affinity-purified from rabbit antiserum by affinity-chromatography using epitope-specific immunogen.

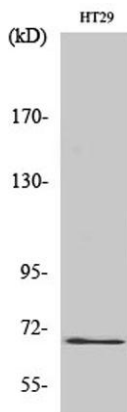
<b>Clonality</b>	Polyclonal
<b>Concentration</b>	1 mg/ml
<b>Observed band</b>	64kD
<b>Human Gene ID</b>	2635
<b>Human Swiss-Prot Number</b>	Q9H0R5
<b>Alternative Names</b>	GBP3; Guanylate-binding protein 3; GTP-binding protein 3; GBP-3; Guanine nucleotide-binding protein 3

## Background

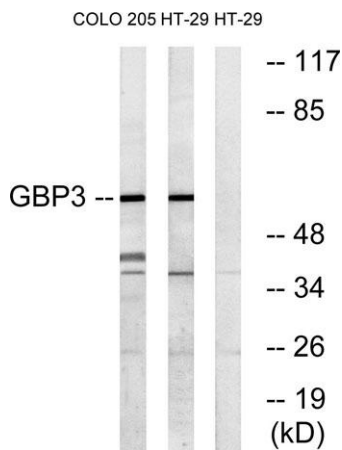
This gene encodes a member of the guanylate-binding protein (GBP) family. GBPs specifically bind guanine nucleotides (GMP, GDP, and GTP) and contain two of the three consensus motifs found in typical GTP-binding proteins. The encoded protein interacts with a member of the germinal center kinase family. Multiple transcript variants encoding different isoforms have been found for this gene. [provided by RefSeq, Jan 2016],



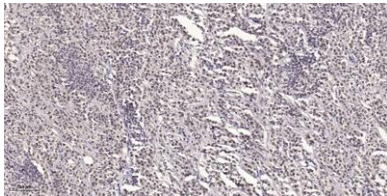
Western Blot analysis of various cells using GBP3 Polyclonal Antibody



Western Blot analysis of COLO205 cells using GBP3 Polyclonal Antibody



Western blot analysis of lysates from HT-29 and COLO cells, using GBP3 Antibody. The lane on the right is blocked with the synthesized peptide.



Immunohistochemical analysis of paraffin-embedded human small intestinal carcinoma tissue. 1,primary Antibody was diluted at 1:200(4° overnight). 2, Sodium citrate pH 6.0 was used for antigen retrieval(>98°C,20min). 3,Secondary antibody was diluted at 1:200