

Gasdermin C rabbit pAb

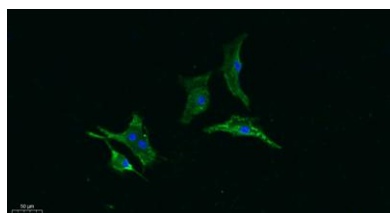
Cat#: orb765275 (Manual)

For research use only. Not intended for diagnostic use.

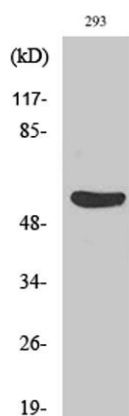
Product Name	Gasdermin C rabbit pAb
Host species	Rabbit
Applications	WB IF;ELISA
Species Cross-Reactivity	Human;Rat;Mouse;
Recommended dilutions	WB 1:500-2000 IF 1:100-300 ELISA 1:5000-20000 Not yet tested in other applications.
Immunogen	The antiserum was produced against synthesized peptide derived from human GSDMC. AA range:109-158
Specificity	Gasdermin C Polyclonal Antibody detects endogenous levels of Gasdermin C protein.
Formulation	Liquid in PBS containing 50% glycerol, 0.5% BSA and 0.02% sodium azide..
Storage	Store at -20°C. Avoid repeated freeze-thaw cycles.
Protein Name	Gasdermin-C
Gene Name	GSDMC
Cellular localization	[Gasdermin-C]: Cytoplasm, cytosol .; [Gasdermin-C, N-terminal]: Cell membrane ; Multi-pass membrane protein .
Purification	The antibody was affinity-purified from rabbit antiserum by affinity-chromatography using epitope-specific immunogen.
Clonality	Polyclonal

Concentration	1 mg/ml
Observed band	55kD
Human Gene ID	56169
Human Swiss-Prot Number	Q9BYG8
Alternative Names	GSDMC; MLZE; Gasdermin-C; Melanoma-derived leucine zipper-containing extranuclear factor

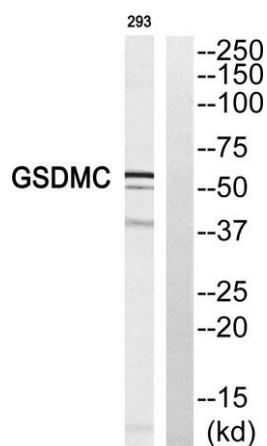
Background caution:Despite its name, it is unclear if this protein contains a functional leucine zipper.,similarity:Belongs to the gasdermin family.,tissue specificity:Expressed primarily in trachea and spleen.,



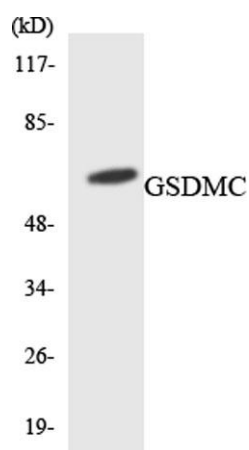
Immunofluorescence analysis of A549. 1,primary Antibody was diluted at 1:200(4°C overnight). 2, Goat Anti Rabbit IgG (H&L) - Alexa Fluor 488 Secondary antibody was diluted at 1:1000(room temperature, 50min).3, Picture B: DAPI(blue) 10min.



Western Blot analysis of various cells using Gasdermin C Polyclonal Antibody diluted at 1:500



Western blot analysis of GSDMC Antibody. The lane on the right is blocked with the GSDMC peptide.



Western blot analysis of the lysates from HepG2 cells using GSDMC antibody.