

**GALK1 rabbit pAb****Cat#: orb765271 (Manual)**

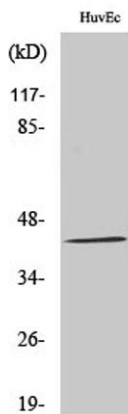
For research use only. Not intended for diagnostic use.

<b>Product Name</b>	GALK1 rabbit pAb
<b>Host species</b>	Rabbit
<b>Applications</b>	WB;IHC;IF;ELISA
<b>Species Cross-Reactivity</b>	Human;Mouse;Rat
<b>Recommended dilutions</b>	Western Blot: 1/500 - 1/2000. Immunohistochemistry: 1/100 - 1/300. Immunofluorescence: 1/200 - 1/1000. ELISA: 1/10000. Not yet tested in other applications.
<b>Immunogen</b>	The antiserum was produced against synthesized peptide derived from human GALK1. AA range:1-50
<b>Specificity</b>	GALK1 Polyclonal Antibody detects endogenous levels of GALK1 protein.
<b>Formulation</b>	Liquid in PBS containing 50% glycerol, 0.5% BSA and 0.02% sodium azide..
<b>Storage</b>	Store at -20°C. Avoid repeated freeze-thaw cycles.
<b>Protein Name</b>	Galactokinase
<b>Gene Name</b>	GALK1
<b>Cellular localization</b>	cytoplasm,cytosol,membrane,extracellular exosome,
<b>Purification</b>	The antibody was affinity-purified from rabbit antiserum by affinity-chromatography using epitope-specific immunogen.
<b>Clonality</b>	Polyclonal

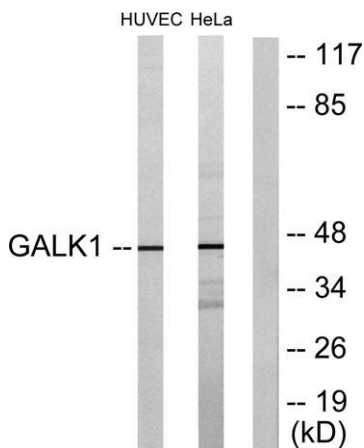
<b>Concentration</b>	1 mg/ml
<b>Observed band</b>	45kD
<b>Human Gene ID</b>	2584
<b>Human Swiss-Prot Number</b>	P51570
<b>Alternative Names</b>	GALK1; GALK; Galactokinase; Galactose kinase

## Background

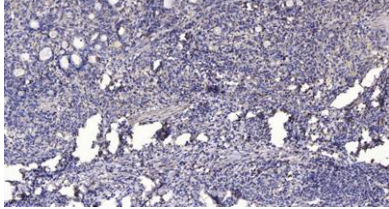
Galactokinase is a major enzyme for the metabolism of galactose and its deficiency causes congenital cataracts during infancy and presenile cataracts in the adult population. [provided by RefSeq, Jul 2008],



Western Blot analysis of various cells using GALK1 Polyclonal Antibody diluted at 1:1000



Western blot analysis of lysates from HUVEC and HeLa cells, using GALK1 Antibody. The lane on the right is blocked with the synthesized peptide.



**Immunohistochemical analysis of paraffin-embedded human Gastric adenocarcinoma. 1, Antibody was diluted at 1:200(4° overnight). 2, Tris-EDTA,pH9.0 was used for antigen retrieval. 3,Secondary antibody was diluted at 1:200(room temperature, 45min).**