

Galectin-4 rabbit pAb

Cat#: orb765269 (Manual)

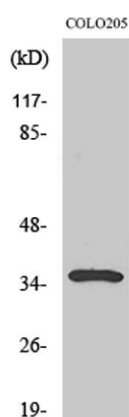
For research use only. Not intended for diagnostic use.

Product Name	Galectin-4 rabbit pAb
Host species	Rabbit
Applications	WB;IHC;IF;ELISA
Species Cross-Reactivity	Human;Rat;Mouse;
Recommended dilutions	Western Blot: 1/500 - 1/2000. Immunohistochemistry: 1/100 - 1/300. ELISA: 1/20000. Not yet tested in other applications.
Immunogen	The antiserum was produced against synthesized peptide derived from human LEG4. AA range:61-110
Specificity	Galectin-4 Polyclonal Antibody detects endogenous levels of Galectin-4 protein.
Formulation	Liquid in PBS containing 50% glycerol, 0.5% BSA and 0.02% sodium azide..
Storage	Store at -20°C. Avoid repeated freeze-thaw cycles.
Protein Name	Galectin-4
Gene Name	LGALS4
Cellular localization	extracellular space,cytosol,plasma membrane,
Purification	The antibody was affinity-purified from rabbit antiserum by affinity-chromatography using epitope-specific immunogen.
Clonality	Polyclonal

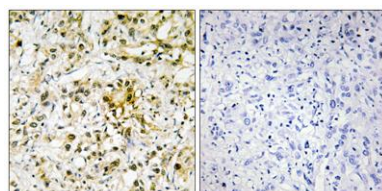
Concentration	1 mg/ml
Observed band	36kD
Human Gene ID	3960
Human Swiss-Prot Number	P56470
Alternative Names	LGALS4; Galectin-4; Gal-4; Antigen NY-CO-27; L-36 lactose-binding protein; L36LBP; Lactose-binding lectin 4

Background

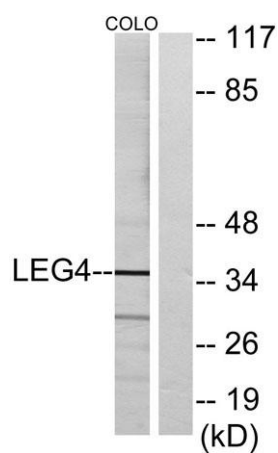
The galectins are a family of beta-galactoside-binding proteins implicated in modulating cell-cell and cell-matrix interactions. The expression of this gene is restricted to small intestine, colon, and rectum, and it is underexpressed in colorectal cancer. [provided by RefSeq, Jul 2008],



Western Blot analysis of various cells using Galectin-4 Polyclonal Antibody



Immunohistochemistry analysis of paraffin-embedded human liver carcinoma tissue, using LEG4 Antibody. The picture on the right is blocked with the synthesized peptide.



Western blot analysis of lysates from COLO cells, using LEG4 Antibody. The lane on the right is blocked with the synthesized peptide.