

GABAA R α 6 rabbit pAb

Cat#: orb765263 (Manual)

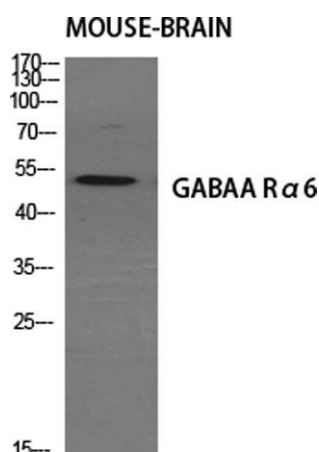
For research use only. Not intended for diagnostic use.

Product Name	GABAA R α 6 rabbit pAb
Host species	Rabbit
Applications	WB;ELISA
Species Cross-Reactivity	Human;Mouse;Rat
Recommended dilutions	Western Blot: 1/500 - 1/2000. ELISA: 1/40000. Not yet tested in other applications.
Immunogen	The antiserum was produced against synthesized peptide derived from human GABRA6. AA range:61-110
Specificity	GABAA R α 6 Polyclonal Antibody detects endogenous levels of GABAA R α 6 protein.
Formulation	Liquid in PBS containing 50% glycerol, 0.5% BSA and 0.02% sodium azide..
Storage	Store at -20°C. Avoid repeated freeze-thaw cycles.
Protein Name	Gamma-aminobutyric acid receptor subunit alpha-6
Gene Name	GABRA6
Cellular localization	Cell junction, synapse, postsynaptic cell membrane; Multi-pass membrane protein. Cell membrane; Multi-pass membrane protein.
Purification	The antibody was affinity-purified from rabbit antiserum by affinity-chromatography using epitope-specific immunogen.
Clonality	Polyclonal

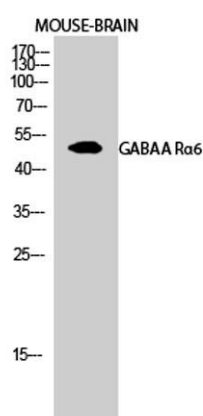
Concentration	1 mg/ml
Observed band	51kD
Human Gene ID	2559
Human Swiss-Prot Number	Q16445
Alternative Names	GABRA6; Gamma-aminobutyric acid receptor subunit alpha-6; GABA(A) receptor subunit alpha-6

Background

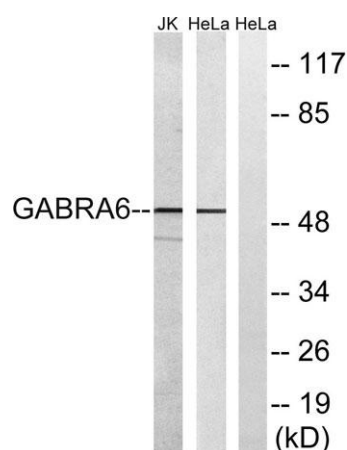
GABA is the major inhibitory neurotransmitter in the mammalian brain where it acts at GABA-A receptors, which are ligand-gated chloride channels. Chloride conductance of these channels can be modulated by agents such as benzodiazepines that bind to the GABA-A receptor. At least 16 distinct subunits of GABA-A receptors have been identified. [provided by RefSeq, Jul 2008],



Western Blot analysis of various cells using GABAA Rα6 Polyclonal Antibody diluted at 1:500



Western Blot analysis of MOUSE-BRAIN cells using GABAA Rα6 Polyclonal Antibody diluted at 1:500



Western blot analysis of lysates from HeLa and Jurkat cells, using GABRA6 Antibody. The lane on the right is blocked with the synthesized peptide.