

## Fucokinase rabbit pAb

**Cat#: orb765254 (Manual)**

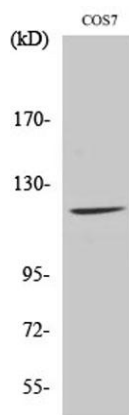
For research use only. Not intended for diagnostic use.

<b>Product Name</b>	Fucokinase rabbit pAb
<b>Host species</b>	Rabbit
<b>Applications</b>	WB;IF;ELISA
<b>Species Cross-Reactivity</b>	Human;Mouse;Monkey
<b>Recommended dilutions</b>	Western Blot: 1/500 - 1/2000. Immunofluorescence: 1/200 - 1/1000. ELISA: 1/20000. Not yet tested in other applications.
<b>Immunogen</b>	The antiserum was produced against synthesized peptide derived from human FUK. AA range: 11-60
<b>Specificity</b>	Fucokinase Polyclonal Antibody detects endogenous levels of Fucokinase protein.
<b>Formulation</b>	Liquid in PBS containing 50% glycerol, 0.5% BSA and 0.02% sodium azide..
<b>Storage</b>	Store at -20°C. Avoid repeated freeze-thaw cycles.
<b>Protein Name</b>	L-fucose kinase
<b>Gene Name</b>	FUK
<b>Cellular localization</b>	cytoplasm,cytosol,
<b>Purification</b>	The antibody was affinity-purified from rabbit antiserum by affinity-chromatography using epitope-specific immunogen.
<b>Clonality</b>	Polyclonal

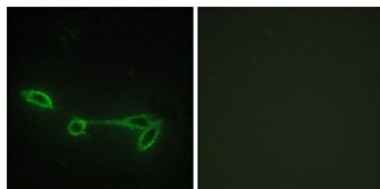
<b>Concentration</b>	1 mg/ml
<b>Observed band</b>	110kD
<b>Human Gene ID</b>	197258
<b>Human Swiss-Prot Number</b>	Q8N0W3
<b>Alternative Names</b>	FUK; L-fucose kinase; Fucokinase

### Background

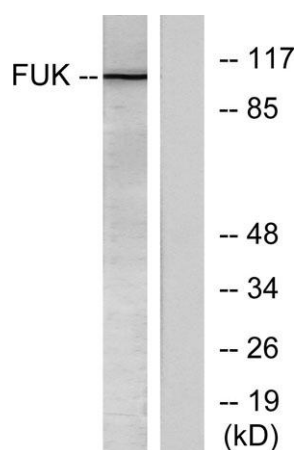
fucokinase(FUK) Homo sapiens The protein encoded by this gene belongs to the GHMP (galacto-, homoserine, mevalonate and phosphomevalonate) kinase family and catalyzes the phosphorylation of L-fucose to form beta-L-fucose 1-phosphate. This enzyme catalyzes the first step in the utilization of free L-fucose in glycoprotein and glycolipid synthesis. L-fucose may be important in mediating a number of cell-cell interactions such as blood group antigen recognition, inflammation, and metastasis. While several transcript variants may exist for this gene, the full-length nature of only one has been described to date. [provided by RefSeq, Jul 2008],



**Western Blot analysis of various cells using Fucokinase Polyclonal Antibody**



**Immunofluorescence analysis of NIH/3T3 cells, using FUK Antibody. The picture on the right is blocked with the synthesized peptide.**



**Western blot analysis of lysates from COS7 cells, treated with insulin 0.01U/ml 45', using FUK Antibody. The lane on the right is blocked with the synthesized peptide.**