

FRS3 rabbit pAb**Cat#: orb765252 (Manual)**

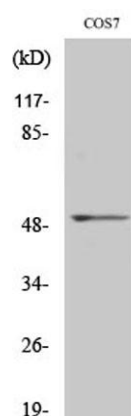
For research use only. Not intended for diagnostic use.

Product Name	FRS3 rabbit pAb
Host species	Rabbit
Applications	WB;ELISA
Species Cross-Reactivity	Human;Monkey
Recommended dilutions	Western Blot: 1/500 - 1/2000. ELISA: 1/40000. Not yet tested in other applications.
Immunogen	The antiserum was produced against synthesized peptide derived from human FRS3. AA range:191-240
Specificity	FRS3 Polyclonal Antibody detects endogenous levels of FRS3 protein.
Formulation	Liquid in PBS containing 50% glycerol, 0.5% BSA and 0.02% sodium azide..
Storage	Store at -20°C. Avoid repeated freeze-thaw cycles.
Protein Name	Fibroblast growth factor receptor substrate 3
Gene Name	FRS3
Cellular localization	Membrane; Lipid-anchor.
Purification	The antibody was affinity-purified from rabbit antiserum by affinity-chromatography using epitope-specific immunogen.
Clonality	Polyclonal

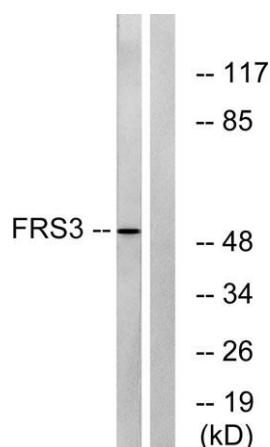
Concentration	1 mg/ml
Observed band	54kD
Human Gene ID	10817
Human Swiss-Prot Number	O43559
Alternative Names	FRS3; Fibroblast growth factor receptor substrate 3; FGFR substrate 3; FGFR-signaling adaptor SNT2; Suc1-associated neurotrophic factor target 2; SNT-2

Background

This gene encodes a substrate for the fibroblast growth factor receptor. The encoded protein is found in the peripheral plasma membrane and links fibroblast growth factor receptor stimulation to activators of Ras. The encoded protein down-regulates extracellular regulated kinase 2 through direct binding. [provided by RefSeq, Jul 2013],



Western Blot analysis of various cells using FRS3 Polyclonal Antibody



Western blot analysis of lysates from COS7 cells, using FRS3 Antibody. The lane on the right is blocked with the synthesized peptide.