

Frizzled-3 rabbit pAb

Cat#: orb765247 (Manual)

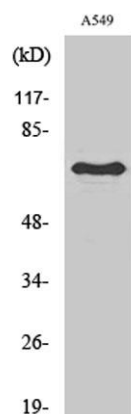
For research use only. Not intended for diagnostic use.

Product Name	Frizzled-3 rabbit pAb
Host species	Rabbit
Applications	WB;IF;ELISA
Species Cross-Reactivity	Human;Mouse
Recommended dilutions	Western Blot: 1/500 - 1/2000. Immunofluorescence: 1/200 - 1/1000. ELISA: 1/10000. Not yet tested in other applications.
Immunogen	The antiserum was produced against synthesized peptide derived from human FZD3. AA range:141-190
Specificity	Frizzled-3 Polyclonal Antibody detects endogenous levels of Frizzled-3 protein.
Formulation	Liquid in PBS containing 50% glycerol, 0.5% BSA and 0.02% sodium azide..
Storage	Store at -20°C. Avoid repeated freeze-thaw cycles.
Protein Name	Frizzled-3
Gene Name	FZD3
Cellular localization	Membrane; Multi-pass membrane protein. Cell membrane ; Multi-pass membrane protein . Cell surface . Apical cell membrane ; Multi-pass membrane protein. Colocalizes with FZD6 at the apical face of the cell (By similarity). .
Purification	The antibody was affinity-purified from rabbit antiserum by affinity-chromatography using epitope-specific immunogen.

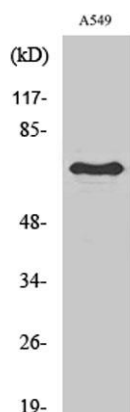
Clonality	Polyclonal
Concentration	1 mg/ml
Observed band	76kD
Human Gene ID	7976
Human Swiss-Prot Number	Q9NPG1
Alternative Names	FZD3; Frizzled-3; Fz-3; hFz3

Background

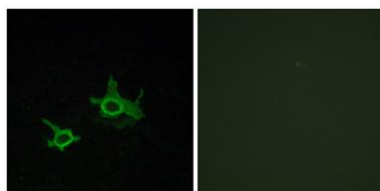
frizzled class receptor 3(FZD3) Homo sapiens This gene is a member of the frizzled gene family. Members of this family encode seven-transmembrane domain proteins that are receptors for the wingless type MMTV integration site family of signaling proteins. Most frizzled receptors are coupled to the beta-catenin canonical signaling pathway. The function of this protein is unknown, although it may play a role in mammalian hair follicle development. Alternative splicing results in multiple transcript variants. This gene is a susceptibility locus for schizophrenia. [provided by RefSeq, Dec 2010],



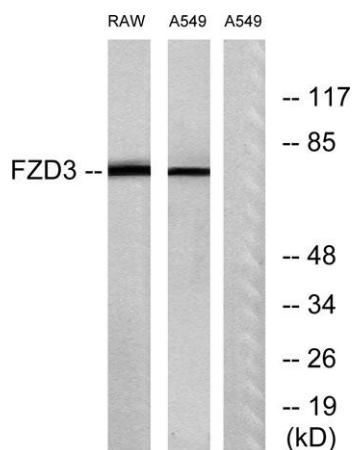
Western Blot analysis of various cells using Frizzled-3 Polyclonal Antibody



Western Blot analysis of RAW264.7 cells using Frizzled-3 Polyclonal Antibody



Immunofluorescence analysis of COS7 cells, using FZD3 Antibody. The picture on the right is blocked with the synthesized peptide.



Western blot analysis of lysates from A549 and RAW264.7 cells, using FZD3 Antibody. The lane on the right is blocked with the synthesized peptide.