

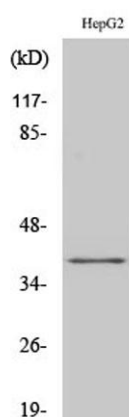
**FAST-1/2 rabbit pAb****Cat#: orb765204 (Manual)**

For research use only. Not intended for diagnostic use.

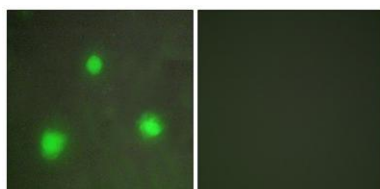
<b>Product Name</b>	FAST-1/2 rabbit pAb
<b>Host species</b>	Rabbit
<b>Applications</b>	WB;IF;ELISA
<b>Species Cross-Reactivity</b>	Human;Mouse
<b>Recommended dilutions</b>	Western Blot: 1/500 - 1/2000. Immunofluorescence: 1/200 - 1/1000. ELISA: 1/10000. Not yet tested in other applications.
<b>Immunogen</b>	The antiserum was produced against synthesized peptide derived from human FOXH1. AA range:10-59
<b>Specificity</b>	FAST-1/2 Polyclonal Antibody detects endogenous levels of FAST-1/2 protein.
<b>Formulation</b>	Liquid in PBS containing 50% glycerol, 0.5% BSA and 0.02% sodium azide..
<b>Storage</b>	Store at -20°C. Avoid repeated freeze-thaw cycles.
<b>Protein Name</b>	Forkhead box protein H1
<b>Gene Name</b>	FOXH1
<b>Cellular localization</b>	Nucleus.
<b>Purification</b>	The antibody was affinity-purified from rabbit antiserum by affinity-chromatography using epitope-specific immunogen.
<b>Clonality</b>	Polyclonal

<b>Concentration</b>	1 mg/ml
<b>Observed band</b>	40kD
<b>Human Gene ID</b>	8928
<b>Human Swiss-Prot Number</b>	O75593
<b>Alternative Names</b>	FOXH1; FAST1; FAST2; Forkhead box protein H1; Forkhead activin signal transducer 1; Fast-1; hFAST-1; Forkhead activin signal transducer 2; Fast-2

**Background** FOXH1 encodes a human homolog of *Xenopus* forkhead activin signal transducer-1. FOXH1 protein binds SMAD2 and activates an activin response element via binding the DNA motif TGT(G/T)(T/G)ATT. [provided by RefSeq, Jul 2008].



Western Blot analysis of various cells using FAST-1/2 Polyclonal Antibody cells nucleus extracted by Minute TM Cytoplasmic and Nuclear Fractionation kit (SC-003, Invent biotech, MN, USA).



Immunofluorescence analysis of A549 cells, using FOXH1 Antibody. The picture on the right is blocked with the synthesized peptide.